

Annex C

Construction Programme of the Project

Activity ID	Activity Name	Remaining Duration	Start	Finish	Total Float	2015												2016												2017											
						Nov	Dec	Jan	Feb	Mar	Apr	May	Jun	Jul	Aug	Sep	Oct	Nov	Dec	Jan	Feb	Mar	Apr	May	Jun	Jul	Aug	Sep	Oct	Nov	Dec	Jan	Feb	Mar	Apr	May	Jun	Jul	Aug	Sep	Oct
Contract No. EP/SP/61/10 - The Design & Construction Works																																									
LETTER OF ACCEPTANCE																																									
		0d	19-Nov-14 A	19-Nov-14 A	0d																																				
		0d	19-Nov-14 A	19-Nov-14 A	0d																																				
		0d	19-Nov-14 A	19-Nov-14 A	0d																																				
KD100200	LETTER OF ACCEPTANCE	0d	19-Nov-14 A	19-Nov-14 A	0d	LETTER OF ACCEPTANCE																																			
MAJOR MILESTONES																																									
MC1 Milestones for Preliminaries and General Requirements																																									
		0d	16-Jan-15 A	11-Nov-15 A	0d																																				
		0d	16-Jan-15 A	11-Nov-15 A	0d																																				
MC110100	MC1.1 - Substantial Completion of ER & IC Accommodation	0d	16-Jan-15 A	17-Jun-15 A	0d	◆ MC1.1 - Substantial Completion of ER & IC Accommodation																																			
MC110200	MC1.2 - Joint signing of IC Agreement	0d		16-Jan-15 A	0d	◆ MC1.2 - Joint signing of IC Agreement																																			
MC110300	MC1.3 - Employer's consent granted on draft Contractor's Plans	0d		11-Nov-15 A	0d	◆ MC1.3 - Employer's consent granted on draft Contractor's Plans																																			
MC2 Milestones for Design of the Works																																									
MC2.1 The Employer's consent granted on Detailed Design Submission																																									
		152d	28-Oct-15 A	17-Jun-16	-92d																																				
		152d	28-Oct-15 A	17-Jun-16	-92d																																				
MC210100	MC2.1.1 - Employer's consent granted in respect of Detailed Design of Waste Receiving & Pre-treatment System	0d		18-Jan-16	8d	◆ MC2.1.1 - Employer's consent granted in respect of Detailed Design of Waste Receiving & Pre-treatment System																																			
MC210200	MC2.1.2 - Employer's consent granted in respect of Detailed Design of Anaerobic Digestion Treatment System	0d		21-Dec-15 A	0d	◆ MC2.1.2 - Employer's consent granted in respect of Detailed Design of Anaerobic Digestion Treatment System																																			
MC210300	MC2.1.3 - Employer's consent granted in respect of Detailed Design of Biogas treatment & CHP Generation System	0d		07-Jan-16 A	0d	◆ MC2.1.3 - Employer's consent granted in respect of Detailed Design of Biogas treatment & CHP Generation System																																			
MC210400	MC2.1.4 - Employer's consent granted in respect of Detailed Design of Composting System	0d		25-Nov-15 A	0d	◆ MC2.1.4 - Employer's consent granted in respect of Detailed Design of Composting System																																			
MC210500	MC2.1.5 - Employer's consent granted in respect of Detailed Design of CAPCS & WWTS	0d		28-Oct-15 A	0d	◆ MC2.1.5 - Employer's consent granted in respect of Detailed Design of CAPCS & WWTS																																			
MC210600	MC2.1.6 - Employer's consent granted in respect of Detail Design of control & instrumentation works	0d		29-Apr-16	-43d	◆ MC2.1.6 - Employer's consent granted in respect of Detail Design of control & instrumentation works																																			
MC210700	MC2.1.7 - Employer's consent granted in respect of building services & electrical works	0d		04-May-16	-124d	◆ MC2.1.7 - Employer's consent granted in respect of building services & electrical works																																			
MC210800	MC2.1.8 - Employer's consent granted in respect of Detailed Design of civil, structural & geotechnical works	0d		17-Jun-16	-92d	◆ MC2.1.8 - Employer's consent granted in respect of Detailed Design of civil, structural & geotechnical works																																			
MC210900	MC2.1.9 - Employer's consent granted in respect of Detailed Design of architectural & landscape works	0d		30-May-16	-74d	◆ MC2.1.9 - Employer's consent granted in respect of Detailed Design of architectural & landscape works																																			
MC2.2 Completion of the Design of the Works																																									
		0d	17-Jun-16	17-Jun-16	-92d																																				
		0d	17-Jun-16	17-Jun-16	-92d																																				
MC220100	MC2.2 - Completion of the Design of the Works	0d	17-Jun-16	17-Jun-16	-92d	◆ MC2.2 - Completion of the Design of the Works																																			
MC3 Milestones for Construction of the Works																																									
MC3.1 Construction of Civil and Structural Works																																									
		183d	22-Jul-15 A	03-Jan-17	61d																																				
		183d	22-Jul-15 A	03-Jan-17	61d																																				
MC310100	MC3.1.1 - Completion of site formation	0d		25-May-16	-41d	◆ MC3.1.1 - Completion of site formation																																			
MC310200	MC3.1.2 - Completion of 50% of piling works	0d		22-Jul-15 A	0d	◆ MC3.1.2 - Completion of 50% of piling works																																			
MC310300	MC3.1.3 - Completion of 100% of piling works	0d		22-Sep-15 A	0d	◆ MC3.1.3 - Completion of 100% of piling works																																			
MC310400	MC3.1.4 - Completion of 50% of superstructure works	0d		22-Jul-16	-129d	◆ MC3.1.4 - Completion of 50% of superstructure works																																			
MC310500	MC3.1.5 - Completion of 80% of superstructure works	0d		10-Aug-16	-69d	◆ MC3.1.5 - Completion of 80% of superstructure works																																			
MC310600	MC3.1.6 - Completion of 100% of superstructure works	0d		07-Oct-16	-63d	◆ MC3.1.6 - Completion of 100% of superstructure works																																			
MC310700	MC3.1.7 - Completion of 100% of drainage, road and geotechnical works	0d		03-Jan-17	61d	◆ MC3.1.7 - Completion of 100% of drainage, road and geotechnical works																																			
MC3.2 Delivery of Materials and Equipment to the Site																																									
		99d	29-Apr-16	29-Aug-16	5d																																				
		99d	29-Apr-16	29-Aug-16	5d																																				
MC320100	MC3.2.1 - Completion of Delivery of Pre-treatment System	0d		28-Jul-16	-48d	◆ MC3.2.1 - Completion of Delivery of Pre-treatment System																																			
MC320200	MC3.2.2 - Completion of Delivery of Anaerobic Digesters	0d		14-Jul-16	-80d	◆ MC3.2.2 - Completion of Delivery of Anaerobic Digesters																																			
MC320300	MC3.2.3 - Completion of Delivery of Combined Heat and Power Units	0d		29-Aug-16	-26d	◆ MC3.2.3 - Completion of Delivery of Combined Heat and Power Units																																			
MC320400	MC3.2.4 - Completion of Delivery of Composting Tunnels	0d		16-Aug-16	13d	◆ MC3.2.4 - Completion of Delivery of Composting Tunnels																																			
MC320500	MC3.2.5 - Completion of Delivery of Centralized Air Pollution Control System	0d		29-Apr-16	-45d	◆ MC3.2.5 - Completion of Delivery of Centralized Air Pollution Control System																																			
MC320600	MC3.2.6 - Completion of Delivery of Wastewater Treatment System	0d		15-Jul-16	-76d	◆ MC3.2.6 - Completion of Delivery of Wastewater Treatment System																																			
MC3.3 Equipment and System Installations																																									
		132d	25-Nov-16	12-May-17	-92d																																				
		132d	25-Nov-16	12-May-17	-92d																																				
MC330100	MC3.3.1 - Completion of Waste Receiving, Storage and Feeding System & Pre-treatment System	0d		01-Mar-17	-133d	◆ MC3.3.1 - Completion of Waste Receiving, Storage and Feeding System																																			
MC330200	MC3.3.2 - Completion of Anaerobic Digestion Treatment System	0d		01-Mar-17	-135d	◆ MC3.3.2 - Completion of Anaerobic Digestion Treatment System																																			
MC330300	MC3.3.3 - Completion of Biogas Cleaning and Storage System	0d		09-Feb-17	-55d	◆ MC3.3.3 - Completion of Biogas Cleaning and Storage System																																			
MC330400	MC3.3.4 - Completion of Heat Recovery and Power Generation System	0d		21-Jan-17	-53d	◆ MC3.3.4 - Completion of Heat Recovery and Power Generation System																																			
MC330500	MC3.3.5 - Completion of Composting System	0d		25-Nov-16	40d	◆ MC3.3.5 - Completion of Composting System																																			
MC330600	MC3.3.6 - Completion of Centralized Air Pollution Control System	0d		06-Mar-17	-40d	◆ MC3.3.6 - Completion of Centralized Air Pollution Control System																																			
MC330700	MC3.3.7 - Completion of Wastewater Treatment System	0d		30-Dec-16	-109d	◆ MC3.3.7 - Completion of Wastewater Treatment System																																			
MC330800	MC3.3.8 - Completion of control and instrumentation works	0d		18-Feb-17	-124d	◆ MC3.3.8 - Completion of control and instrumentation works																																			
MC330900	MC3.3.9 - Completion of building services works & electrical works	0d		12-May-17	-131d	◆ MC3.3.9 - Completion of building services works																																			
MC3.4 Architectural and Landscape works																																									
		0d	22-May-17	22-May-17	-49d																																				
		0d	22-May-17	22-May-17	-49d																																				
MC340100	MC3.4 - Completion of architectural and landscape works	0d	22-May-17	22-May-17	-49d	◆ MC3.4 - Completion of architectural and landscape works																																			
MC3.5 Testing and Commissioning																																									
		100d	18-May-17	14-Sep-17	-146d																																				

Main Gantt chart table with columns for Activity ID, Activity Name, Remaining Duration, Start, Finish, Total Float, and a monthly grid from Nov 2015 to Dec 2017. Contains multiple rows of activities and milestones with corresponding Gantt bars.

Activity ID	Activity Name	Remaining Duration	Start	Finish	Total Float	2015												2016												2017												
						Nov	Dec	Jan	Feb	Mar	Apr	May	Jun	Jul	Aug	Sep	Oct	Nov	Dec	Jan	Feb	Mar	Apr	May	Jun	Jul	Aug	Sep	Oct	Nov	Dec	Jan	Feb	Mar	Apr	May	Jun	Jul	Aug	Sep	Oct	Nov
TP100140	Employer Consents to Factory Acceptance Test Plan	0d		13-May-16	-151d																																					◆ Employer Consents to Factory Acceptance Test Plan
Site Acceptance Test Plan																																										
		56d	08-Aug-16	14-Oct-16	-96d																																					
		56d	08-Aug-16	14-Oct-16	-96d																																					
TP100200	Submission of Site Acceptance Test Plan	20d	08-Aug-16	02-Sep-16	-82d																																					■ Submission of Site Acceptance Test Plan
TP100210	IC checks & comments on Site Acceptance Test Plan	14d	03-Sep-16	16-Sep-16	-116d																																					■ IC checks & comments on Site Acceptance Test Plan
TP100220	Revise & resubmit Site Acceptance Test Plan	7d	17-Sep-16	23-Sep-16	-116d																																					■ Revise & resubmit Site Acceptance Test Plan
TP100230	IC checks & certifies Site Acceptance Test Plan	7d	24-Sep-16	30-Sep-16	-116d																																					■ IC checks & certifies Site Acceptance Test Plan
TP100240	Employer Consents to Site Acceptance Test Plan	0d		14-Oct-16	-116d																																					◆ Employer Consents to Site Acceptance Test Plan
Detail CV																																										
		32d	19-Dec-16	30-Jan-17	-78d																																					
		32d	19-Dec-16	30-Jan-17	-78d																																					
OP100100	Submission of Detail CV before Process Start up and commissioning	1d	19-Dec-16	19-Dec-16	-67d																																					■ Submission of Detail CV before Process Start up and commissioning
OP100110	IC checks & comments on Detail CV	14d	20-Dec-16	02-Jan-17	-97d																																					■ IC checks & comments on Detail CV
OP100120	Revise & resubmit Detail CV	7d	03-Jan-17	09-Jan-17	-97d																																					■ Revise & resubmit Detail CV
OP100130	IC checks & certifies Detail CV	7d	10-Jan-17	16-Jan-17	-97d																																					■ IC checks & certifies Detail CV
OP100140	Employer Consents to Detail CV before Process Start up and commissioning	0d		30-Jan-17	-97d																																					◆ Employer Consents to Detail CV before Process Start up and comm
All System Commissioning Plan																																										
		37d	13-Dec-16	30-Jan-17	-32d																																					
		37d	13-Dec-16	30-Jan-17	-32d																																					
OP100150	Submission of All System Commissioning Plan	5d	13-Dec-16	19-Dec-16	-31d																																					■ Submission of All System Commissioning Plan
OP100160	IC checks & comments on All System Commissioning Plan	14d	20-Dec-16	02-Jan-17	-44d																																					■ IC checks & comments on All System Commissioning Plan
OP100170	Revise & resubmit All System Commissioning Plan	7d	03-Jan-17	09-Jan-17	-44d																																					■ Revise & resubmit All System Commissioning Plan
OP100180	IC checks & certifies All System Commissioning Plan	7d	10-Jan-17	16-Jan-17	-44d																																					■ IC checks & certifies All System Commissioning Plan
OP100190	Employer Consents to All System Commissioning Plan	0d		30-Jan-17	-44d																																					◆ Employer Consents to All System Commissioning Plan
Process Start Up Plan																																										
		42d	01-Feb-17	21-Mar-17	-137d																																					
		42d	01-Feb-17	21-Mar-17	-137d																																					
OP100200	Submission of Process Start up Plan	5d	01-Feb-17	07-Feb-17	-113d																																					■ Submission of Process Start up Plan
OP100210	IC checks & comments on Process Start up Plan	14d	08-Feb-17	21-Feb-17	-168d																																					■ IC checks & comments on Process Start up Plan
OP100220	Revise & resubmit Process Start up Plan	7d	22-Feb-17	28-Feb-17	-168d																																					■ Revise & resubmit Process Start up Plan
OP100230	IC checks & certifies Process Start up Plan	7d	01-Mar-17	07-Mar-17	-168d																																					■ IC checks & certifies Process Start up Plan
OP100240	Employer Consents to Process Start up Plan	0d		21-Mar-17	-168d																																					◆ Employer Consents to Process Start up Plan
Process Commissioning Plan																																										
		37d	07-Apr-17	25-May-17	-113d																																					
		37d	07-Apr-17	25-May-17	-113d																																					
OP100250	Submission of Process Commissioning Plan	5d	07-Apr-17	13-Apr-17	-96d																																					■ Submission of Process Commissioning Plan
OP100260	IC checks & comments on Process Commissioning Plan	14d	14-Apr-17	27-Apr-17	-142d																																					■ IC checks & comments on Process Commissioning
OP100270	Revise & resubmit Process Commissioning Plan	7d	28-Apr-17	04-May-17	-142d																																					■ Revise & resubmit Process Commissioning Plan
OP100280	IC checks & certifies Process Commissioning Plan	7d	05-May-17	11-May-17	-142d																																					■ IC checks & certifies Process Commissioning
OP100290	Employer Consents to Process Commissioning Plan	0d		25-May-17	-142d																																					◆ Employer Consents to Process Commissioning
Operation Plan																																										
		31d	20-Dec-16	31-Jan-17	87d																																					
		31d	20-Dec-16	31-Jan-17	87d																																					
OP100300	Submission of Operation Plan	1d	20-Dec-16	20-Dec-16	72d																																					■ Submission of Operation Plan
OP100310	IC checks & comments on Operation Plan	14d	21-Dec-16	03-Jan-17	108d																																					■ IC checks & comments on Operation Plan
OP100320	Revise & resubmit Operation Plan	7d	04-Jan-17	10-Jan-17	108d																																					■ Revise & resubmit Operation Plan
OP100330	IC checks & certifies Operation Plan	7d	11-Jan-17	17-Jan-17	108d																																					■ IC checks & certifies Operation Plan
OP100340	Employer Consents to Operation Plan	0d		31-Jan-17	108d																																					◆ Employer Consents to Operation Plan
Plant Commissioning Plan																																										
		40d	08-May-17	23-Jun-17	-125d																																					
		40d	08-May-17	23-Jun-17	-125d																																					
OP100350	Submission of Plant Commissioning Plan	5d	08-May-17	12-May-17	-103d																																					■ Submission of Plant Commissioning Plan
OP100360	IC checks & comments on Plant Commissioning Plan	14d	13-May-17	26-May-17	-157d																																					■ IC checks & comments on Plant Commissioning
OP100370	Revise & resubmit Plant Commissioning Plan	7d	27-May-17	02-Jun-17	-157d																																					■ Revise & resubmit Plant Commissioning P
OP100380	IC checks & certifies Plant Commissioning Plan	7d	03-Jun-17	09-Jun-17	-157d																																					■ IC checks & certifies Plant Commissioning
OP100390	Employer Consents to Plant Commissioning Plan	0d		23-Jun-17	-157d																																					◆ Employer Consents to Plant Commissioning
Operation and Maintenance Manuals and Record Drawings																																										
		101d	15-Jun-17	13-Oct-17	0d																																					
		101d	15-Jun-17	13-Oct-17	0d																																					
OP100400	Submission of draft Operation and Maintenance Manual (SPE-A Clause 1.16.1.1)	0d	15-Jun-17		24d																																					◆ Submission of draft Operation and Main
OP100450	IC checks & comments on draft Operation and Maintenance Manual	28d	15-Jun-17	12-Jul-17	34d																																					■ IC checks & comments on draft C
OP100500	Submission of Operation and Maintenance Manual (SPE-A Clause 1.16.1.2)	0d		14-Sep-17	0d																																					◆ Submission of Oper
OP100520	IC checks & Certifies the Operation and Maintenance Manual	28d	15-Sep-17	12-Oct-17	1d																																					■ IC checks & C
OP100550	Submission of Record Drawings (SPE-A Clause 1.6.8)	0d		13-Oct-17	0d																																					◆ Submission of
COMMENCEMENT, SITE POSSESSION AND ACCESS																																										
		296d	18-Dec-14 A	06-Mar-17	180d																																					
		296d	18-Dec-14 A	06-Mar-17	180d																																					

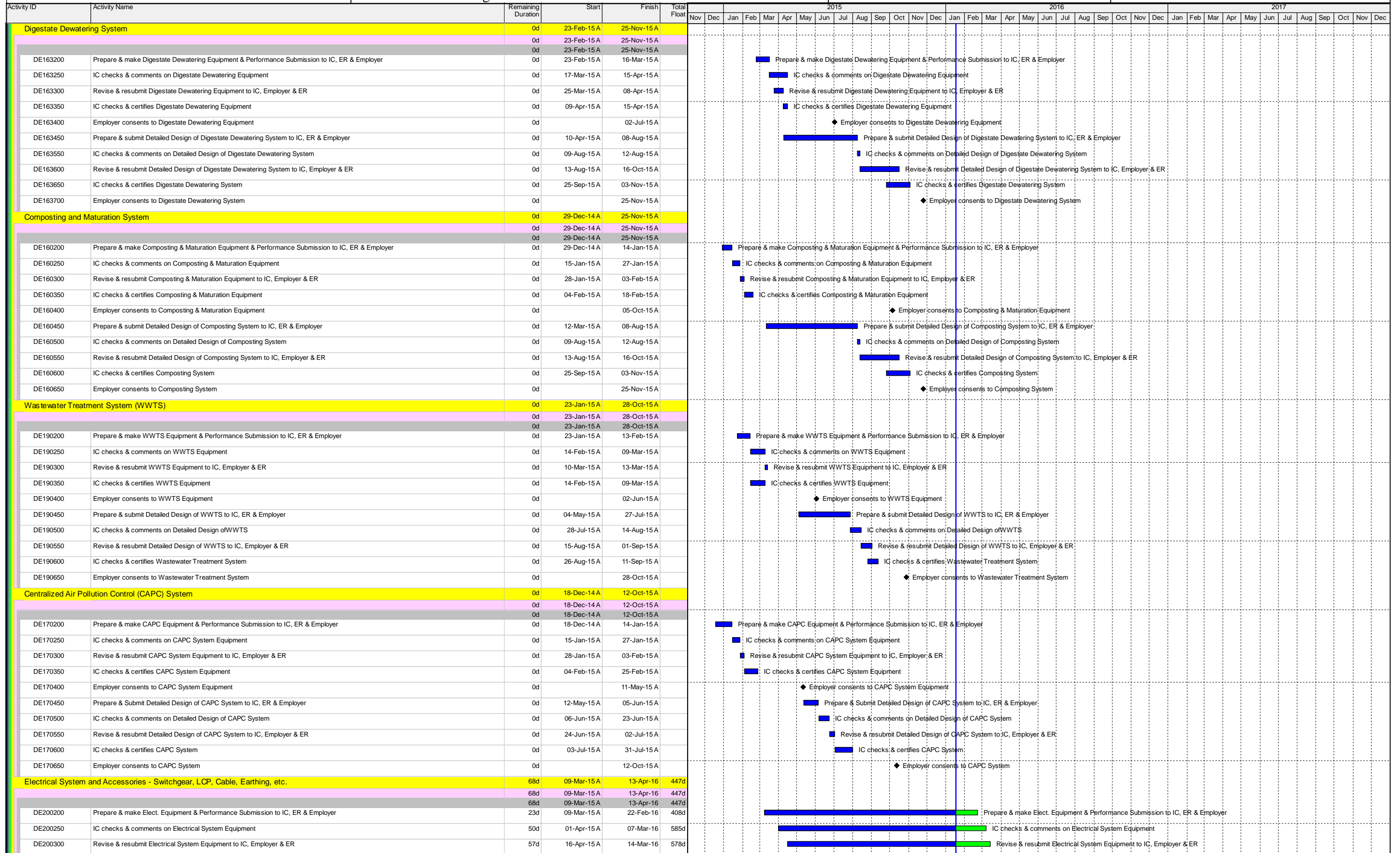
Activity ID	Activity Name	Remaining Duration	Start	Finish	Total Float	2015												2016												2017											
						Nov	Dec	Jan	Feb	Mar	Apr	May	Jun	Jul	Aug	Sep	Oct	Nov	Dec	Jan	Feb	Mar	Apr	May	Jun	Jul	Aug	Sep	Oct	Nov	Dec	Jan	Feb	Mar	Apr	May	Jun	Jul	Aug	Sep	Oct
		296d	18-Dec-14 A	06-Mar-17	180d	◆ COMMENCEMENT OF THE DESIGN AND THE WORKS																																			
KD100300	COMMENCEMENT OF THE DESIGN AND THE WORKS	296d	18-Dec-14 A	06-Mar-17	180d	◆ COMMENCEMENT OF THE DESIGN AND THE WORKS																																			
KD100310	Start Date of Possession of Portion 1	0d	18-Dec-14 A			◆ Start Date of Possession of Portion 1																																			
KD100320	Start Date of Access to Portion 2	0d	16-Mar-16		151d	◆ Start Date of Access to Portion 2																																			
KD100330	End Date of Access to Portion 2	0d		31-Dec-16	62d	◆ End Date of Access to Portion 2																																			
KD100340	Start Date of Possession of Portion 3	0d	18-Dec-14 A			◆ Start Date of Possession of Portion 3																																			
KD100350	End Date of Possession of Portion 3 (to be extended)	0d		31-May-16*	0d	◆ End Date of Possession of Portion 3 (to be extended)																																			
KD100370	Possession of Portion 4 (Ex-Ka Wah Batching Plant)	365d	07-Mar-16*	06-Mar-17	221d	Possession of Portion 4 (Ex-Ka Wah Batching Plant)																																			
SITE ESTABLISHMENT WORKS																																									
		47d	18-Dec-14 A	15-Mar-16	56d	◆ Start of Site Establishment Works																																			
SE100110	Start of Site Establishment Works	47d	18-Dec-14 A	15-Mar-16	56d	◆ Start of Site Establishment Works																																			
SE100120	Submit record photographs of Site & vicinity to ER & IC	0d	22-Dec-14 A	16-Jan-15 A		■ Submit record photographs of Site & vicinity to ER & IC																																			
SE100130	Submit General Arrangement of Site Establishment	0d	18-Dec-14 A	05-Jan-15 A		■ Submit General Arrangement of Site Establishment																																			
SE100140	IC certifies & ER consents to General Arrangement of Site Establishment	0d		04-Mar-15 A		◆ IC certifies & ER consents to General Arrangement of Site Establishment																																			
SE100150	Start of Site Establishment	0d	14-Jan-15 A			◆ Start of Site Establishment																																			
SE100160	Tree survey (Excluding Natural Terrain)	0d	13-Jan-15 A	13-Jan-15 A		■ Tree survey (Excluding Natural Terrain)																																			
SE100170	Project Signboard	0d	16-Apr-15 A	19-Aug-15 A		■ Project Signboard																																			
SE100180	General Works of Site Establishment	0d	14-Jan-15 A	12-Feb-15 A		■ General Works of Site Establishment																																			
SE100190	Site Clearance	0d	15-Jan-15 A	12-Feb-15 A		■ Site Clearance																																			
SE100200	Hoarding, Fencing, Gates & Lighting	0d	09-Mar-15 A	05-May-15 A		■ Hoarding, Fencing, Gates & Lighting																																			
SE100210	Demolition of Concrete Pavement	35d	16-Jun-15 A	01-Mar-16	-89d	■ Demolition of Concrete Pavement																																			
SE100220	Employer Representative Officer's & IC Accommodation at P3	0d	25-Mar-15 A	17-Jun-15 A		■ Employer Representative Officer's & IC Accommodation at P3																																			
SE100240	Contractor's Accommodation at P3	0d	25-Mar-15 A	17-Jun-15 A		■ Contractor's Accommodation at P3																																			
SE100250	Provision of Survey Equipment & Computer Facilities	0d	17-Mar-15 A	29-Jun-15 A		■ Provision of Survey Equipment & Computer Facilities																																			
SE100260	Provision of Land Transport for ER	0d	05-Feb-15 A	01-Apr-15 A		■ Provision of Land Transport for ER																																			
SE100270	Completion of Site Establishment Works	0d		19-Aug-15 A		◆ Completion of Site Establishment Works																																			
SE100280	Install Type II Sheet Pile forming solid fence of 3m high along boundary facing the Siu Ho Wan Water Treatment Works	0d	01-Apr-15 A	16-Apr-15 A		■ Install Type II Sheet Pile forming solid fence of 3m high along boundary facing the Siu Ho Wan Water Treatment Works																																			
SE100290	Submit Tree preservation, transplanting and felling proposal to LandsD and EPD (Excl. Natural Terrain)	0d	02-Feb-15 A	17-Mar-15 A		■ Submit Tree preservation, transplanting and felling proposal to LandsD and EPD (Excl. Natural Terrain)																																			
SE100300	Formation of access to Natural Terrain (if required)	0d	19-Jun-15 A	21-Jun-15 A		■ Formation of access to Natural Terrain (if required)																																			
SE100310	Tree survey (Natural Terrain - if required)	0d	19-Jun-15 A	26-Jun-15 A		■ Tree survey (Natural Terrain - if required)																																			
SE100320	Submit Tree preservation, transplanting and felling proposal to LandsD and EPD (Natural Terrain - if required)	47d	27-Jun-15 A	15-Mar-16	56d	■ Submit Tree preservation, transplanting and felling proposal to LandsD and EPD (Natural Terrain - if required)																																			
DESIGN PREPARATION																																									
Design Criteria Submission (DCS)																																									
		0d	20-Nov-14 A	21-Dec-15 A		◆ Prepare & submit Design Criteria, Codes & Standards to IC, ER & Employer																																			
DP100110	Prepare & submit Design Criteria, Codes & Standards to IC, ER & Employer	0d	20-Nov-14 A	14-Jan-15 A		◆ Prepare & submit Design Criteria, Codes & Standards to IC, ER & Employer																																			
DP100120	IC checks & comments on Design Criteria Submission	0d	15-Jan-15 A	29-Jan-15 A		■ IC checks & comments on Design Criteria Submission																																			
DP100130	Revise & resubmit Design Criteria to IC, ER & Employer	0d	30-Jan-15 A	12-Feb-15 A		■ Revise & resubmit Design Criteria to IC, ER & Employer																																			
DP100140	IC checks & certifies Design Criteria Submission	0d	13-Feb-15 A	09-Mar-15 A		■ IC checks & certifies Design Criteria Submission																																			
DP100150	Submit Design Criteria Check Certificate to Employer & ER	0d		11-Mar-15 A		◆ Submit Design Criteria Check Certificate to Employer & ER																																			
Design Consolidation - Process Layout																																									
		0d	20-Nov-14 A	29-Nov-14 A		◆ Overall Process Layout																																			
DP100160	Overall Process Layout	0d	20-Nov-14 A	29-Nov-14 A		◆ Overall Process Layout																																			
DP100170	JV Process Layout Plan	0d	20-Nov-14 A	29-Nov-14 A		■ JV Process Layout Plan																																			
DP100180	Organic Waste Treatment Systems Layout	0d	20-Nov-14 A	29-Nov-14 A		■ Organic Waste Treatment Systems Layout																																			
DP100190	Biogas Process Layout	0d	20-Nov-14 A	29-Nov-14 A		■ Biogas Process Layout																																			
DP100200	Wastewater Process Layout	0d	20-Nov-14 A	29-Nov-14 A		■ Wastewater Process Layout																																			
DP100210	Waste Air Process Layout	0d	20-Nov-14 A	29-Nov-14 A		■ Waste Air Process Layout																																			
DP100220	Completion of Process Layout	0d		29-Nov-14 A		◆ Completion of Process Layout																																			
Waste Receiving, Pre-treatment & Administration Building #1																																									
		0d	30-Nov-14 A	11-Dec-14 A		◆ Waste Reception Area Layout																																			
DP110110	Waste Reception Area Layout	0d	30-Nov-14 A	11-Dec-14 A		◆ Waste Reception Area Layout																																			
DP110120	Pre-treatment System Layout	0d	30-Nov-14 A	11-Dec-14 A		■ Pre-treatment System Layout																																			

Activity ID	Activity Name	Remaining Duration	Start	Finish	Total Float	2015												2016												2017											
						Nov	Dec	Jan	Feb	Mar	Apr	May	Jun	Jul	Aug	Sep	Oct	Nov	Dec	Jan	Feb	Mar	Apr	May	Jun	Jul	Aug	Sep	Oct	Nov	Dec	Jan	Feb	Mar	Apr	May	Jun	Jul	Aug	Sep	Oct
Man-made Slope																																									
DD101460	Prepare & submit Design of Manmade Slope to GEO	87d	01-Mar-16	17-Jun-16	88d	■ Prepare & submit Design of Manmade Slope to GEO																																			
DD101470	Prepare & submit Manmade Slope Method of Construction	20d	01-Mar-16	30-Mar-16	-60d	■ Prepare & submit Manmade Slope Method of Construction																																			
DD101475	IC checks & certifies Method of Construction of Manmade Slope Design	14d	29-Apr-16	12-May-16	143d	■ IC checks & certifies Method of Construction of Manmade Slope Design																																			
DD101480	GEO - Approval of Manmade Slope Design	0d		28-Apr-16	-60d	◆ GEO - Approval of Manmade Slope Design																																			
DD101500	Submit Manmade Slope Design to IC, ER & Employer	0d		29-Apr-16	-60d	◆ Submit Manmade Slope Design to IC, ER & Employer																																			
DD101520	IC checks & comments on Manmade Slope Design	14d	30-Apr-16	13-May-16	-92d	■ IC checks & comments on Manmade Slope Design																																			
DD101540	Revise & resubmit Manmade Slope Design to IC, Employer & ER	7d	14-May-16	20-May-16	-92d	■ Revise & resubmit Manmade Slope Design to IC, Employer & ER																																			
DD101560	IC checks & certifies Manmade Slope Design	14d	21-May-16	03-Jun-16	-92d	■ IC checks & certifies Manmade Slope Design																																			
DD101580	Employer consents to Manmade Slope Design	0d		17-Jun-16	-92d	◆ Employer consents to Manmade Slope Design																																			
Waste Receiving, Pre-treatment & Administration Building #1																																									
Raft Footing and Substructure Design																																									
DD111000	Prepare & submit Detailed Substructure Design of Bldg #1 to IC, ER & Employer	0d	13-Apr-15 A	20-Jul-15 A		■ Prepare & submit Detailed Substructure Design of Bldg #1 to IC, ER & Employer																																			
DD111010	Prepare & submit Method of Construction for Substructure of Bldg #1	20d	23-Nov-15 A	17-Feb-16	403d	■ Prepare & submit Method of Construction for Substructure of Bldg #1																																			
DD111015	IC checks & certifies Method of Construction of Detailed Substructure Design of Bldg #1	14d	18-Feb-16	02-Mar-16	590d	■ IC checks & certifies Method of Construction of Detailed Substructure Design of Bldg #1																																			
DD111020	IC checks & comments on Detailed Substructure Design of Bldg #1	0d	21-Jul-15 A	11-Aug-15 A		■ IC checks & comments on Detailed Substructure Design of Bldg #1																																			
DD111040	Revise & resubmit Detailed Substructure Design of Bldg #1 to IC, Employer & ER	0d	12-Aug-15 A	28-Aug-15 A		■ Revise & resubmit Detailed Substructure Design of Bldg #1 to IC, Employer & ER																																			
DD111060	IC checks & certifies Detailed Substructure Design of Bldg #1	0d	29-Aug-15 A	31-Dec-15 A		■ IC checks & certifies Detailed Substructure Design of Bldg #1																																			
DD111080	Employer consents to Detailed Substructure Design of Bldg #1	0d		15-Feb-16	606d	◆ Employer consents to Detailed Substructure Design of Bldg #1																																			
Superstructure Design																																									
DD111100	Prepare & submit Detailed Superstructure Design of Bldg #1 to IC, ER & Employer	0d	04-Jun-15 A	11-Mar-16	-130d	■ Prepare & submit Detailed Superstructure Design of Bldg #1 to IC, ER & Employer																																			
DD111110	Prepare & submit Method of Construction for Superstructure of Bldg #1	16d	18-Jan-16	11-Feb-16	-112d	■ Prepare & submit Method of Construction for Superstructure of Bldg #1																																			
DD111115	IC checks & certifies Method of Construction of Detailed Superstructure Design of Bldg #1	14d	12-Feb-16	25-Feb-16	-168d	■ IC checks & certifies Method of Construction of Detailed Superstructure Design of Bldg #1																																			
DD111120	IC checks & comments on Detailed Superstructure Design of Bldg #1	0d	27-Nov-15 A	10-Dec-15 A		■ IC checks & comments on Detailed Superstructure Design of Bldg #1																																			
DD111140	Revise & resubmit Detailed Superstructure Design of Bldg #1 to IC, Employer & ER	33d	11-Dec-15 A	19-Feb-16	-159d	■ Revise & resubmit Detailed Superstructure Design of Bldg #1 to IC, Employer & ER																																			
DD111160	IC checks & certifies Detailed Superstructure Design of Bldg #1	7d	20-Feb-16	26-Feb-16	-159d	■ IC checks & certifies Detailed Superstructure Design of Bldg #1																																			
DD111180	Employer consents to Detailed Superstructure Design of Bldg #1	0d		11-Mar-16	-159d	◆ Employer consents to Detailed Superstructure Design of Bldg #1																																			
Steelwork Design																																									
Building #1 Roof Steel Structure																																									
DD111200	Prepare & submit Detailed Design of Bldg #1 Roof - Structural Steelwork to IC, ER & Employer	39d	01-Feb-16	31-Mar-16	-110d	■ Prepare & submit Detailed Design of Bldg #1 Roof - Structural Steelwork to IC, ER & Employer																																			
DD111210	Prepare & submit Method of Construction for Bldg #1 Roof - Structural Steelwork	25d	24-Feb-16	31-Mar-16	-91d	■ Prepare & submit Method of Construction for Bldg #1 Roof - Structural Steelwork																																			
DD111215	IC checks & certifies Method of Construction of Bldg #1 Roof - Structural Steelwork	14d	01-Apr-16	14-Apr-16	-136d	■ IC checks & certifies Method of Construction of Bldg #1 Roof - Structural Steelwork																																			
DD111220	IC checks & comments on Detailed Design of Bldg #1 Roof - Structural Steelwork	14d	01-Apr-16	14-Apr-16	-164d	■ IC checks & comments on Detailed Design of Bldg #1 Roof - Structural Steelwork																																			
DD111240	Revise & resubmit Detailed Design of Bldg #1 Roof - Structural Steelwork to IC, Employer & ER	7d	15-Apr-16	21-Apr-16	-164d	■ Revise & resubmit Detailed Design of Bldg #1 Roof - Structural Steelwork to IC, Employer & ER																																			
DD111260	IC checks & certifies Detailed Design of Bldg #1 Roof - Structural Steelwork	7d	22-Apr-16	28-Apr-16	-164d	■ IC checks & certifies Detailed Design of Bldg #1 Roof - Structural Steelwork																																			
DD111280	Employer consents to Detailed Design of Bldg #1 Roof - Structural Steelwork	0d		12-May-16	-164d	◆ Employer consents to Detailed Design of Bldg #1 Roof - Structural Steelwork																																			
CAPC Stack																																									
DD311300	Prepare & submit Detailed CAPC Stack - Steel Support Design to IC, ER & Employer	21d	26-Jan-16	29-Feb-16	-13d	■ Prepare & submit Detailed CAPC Stack - Steel Support Design to IC, ER & Employer																																			
DD311310	Prepare & submit Method of Construction for CAPC Stack - Steel Support	21d	26-Jan-16	26-Feb-16	75d	■ Prepare & submit Method of Construction for CAPC Stack - Steel Support																																			
DD311315	IC checks & certifies Method of Construction of CAPC Stack - Steel Support	14d	27-Feb-16	11-Mar-16	114d	■ IC checks & certifies Method of Construction of CAPC Stack - Steel Support																																			
DD311320	IC checks & comments on Detailed CAPC Stack - Steel Support Design	14d	29-Feb-16	13-Mar-16	-24d	■ IC checks & comments on Detailed CAPC Stack - Steel Support Design																																			
DD311340	Revise & resubmit Detailed CAPC Stack - Steel Support Design to IC, Employer & ER	7d	14-Mar-16	20-Mar-16	-24d	■ Revise & resubmit Detailed CAPC Stack - Steel Support Design to IC, Employer & ER																																			
DD311360	IC checks & certifies Detailed CAPC Stack - Steel Support Design	7d	21-Mar-16	27-Mar-16	-24d	■ IC checks & certifies Detailed CAPC Stack - Steel Support Design																																			
DD311380	Employer consents to Detailed CAPC Stack - Steel Support Design	0d		10-Apr-16	-24d	◆ Employer consents to Detailed CAPC Stack - Steel Support Design																																			
Composting & Maturation Building #2																																									
Raft Footing and Substructure Design																																									
DD211000	Prepare & submit Detailed Substructure Design of Bldg #2 to IC, ER & Employer	0d	12-Mar-15 A	15-Oct-15 A		■ Prepare & submit Detailed Substructure Design of Bldg #2 to IC, ER & Employer																																			
DD211010	Prepare & submit Method of Construction for Substructure of Bldg #2	0d	12-Mar-15 A	28-Apr-15 A		■ Prepare & submit Method of Construction for Substructure of Bldg #2																																			
DD211015	IC checks & certifies Method of Construction of Substructure Design of Bldg #2	0d	24-Jun-15 A	15-Oct-15 A		■ IC checks & certifies Method of Construction of Substructure Design of Bldg #2																																			
DD211020	IC checks & comments on Detailed Substructure Design of Bldg #2	0d	29-Apr-15 A	12-May-15 A		■ IC checks & comments on Detailed Substructure Design of Bldg #2																																			
DD211040	Revise & resubmit Detailed Substructure Design of Bldg #2 to IC, Employer & ER	0d	13-May-15 A	24-Jun-15 A		■ Revise & resubmit Detailed Substructure Design of Bldg #2 to IC, Employer & ER																																			
DD211045	IC checks & comments on Detailed Substructure Design of Bldg #2	0d	25-Jun-15 A	06-Jul-15 A		■ IC checks & comments on Detailed Substructure Design of Bldg #2																																			
DD211050	Revise & resubmit Detailed Substructure Design of Bldg #2 to IC, Employer & ER	0d	07-Jul-15 A	03-Aug-15 A		■ Revise & resubmit Detailed Substructure Design of Bldg #2 to IC, Employer & ER																																			
DD211060	IC checks & certifies Detailed Substructure Design of Bldg #2	0d	04-Aug-15 A	18-Sep-15 A		■ IC checks & certifies Detailed Substructure Design of Bldg #2																																			
DD211080	Employer consents to Detailed Substructure Design of Bldg #2	0d		02-Oct-15 A		◆ Employer consents to Detailed Substructure Design of Bldg #2																																			

Activity ID	Activity Name	Remaining Duration	Start	Finish	Total Float	2015												2016												2017											
						Nov	Dec	Jan	Feb	Mar	Apr	May	Jun	Jul	Aug	Sep	Oct	Nov	Dec	Jan	Feb	Mar	Apr	May	Jun	Jul	Aug	Sep	Oct	Nov	Dec	Jan	Feb	Mar	Apr	May	Jun	Jul	Aug	Sep	Oct
Superstructure Design																																									
DD211100	Prepare & submit Detailed Superstructure Design of Bldg #2 to IC, ER & Employer	0d	18-Jul-15 A	23-Nov-15 A		■ Prepare & submit Detailed Superstructure Design of Bldg #2 to IC, ER & Employer																																			
DD211110	Prepare & submit Method of Construction for Superstructure of Bldg #2	0d	18-Jul-15 A	23-Nov-15 A		■ Prepare & submit Method of Construction for Superstructure of Bldg #2																																			
DD211115	IC checks & certifies Method of Construction of Superstructure Design of Bldg #2	0d	17-Sep-15 A	02-Nov-15 A		■ IC checks & certifies Method of Construction of Superstructure Design of Bldg #2																																			
DD211120	IC checks & comments on Detailed Superstructure Design of Bldg #2	0d	28-Aug-15 A	16-Sep-15 A		■ IC checks & comments on Detailed Superstructure Design of Bldg #2																																			
DD211140	Revise & resubmit Detailed Superstructure Design of Bldg #2 to IC, Employer & ER	0d	17-Sep-15 A	26-Oct-15 A		■ Revise & resubmit Detailed Superstructure Design of Bldg #2 to IC, Employer & ER																																			
DD211160	IC checks & certifies Detailed Superstructure Design of Bldg #2	0d	24-Sep-15 A	03-Nov-15 A		■ IC checks & certifies Detailed Superstructure Design of Bldg #2																																			
DD211180	Employer consents to Detailed Superstructure Design of Bldg #2	0d	23-Nov-15 A			◆ Employer consents to Detailed Superstructure Design of Bldg #2																																			
Steelwork Design																																									
Link Bridge Steelwork																																									
DD211200	Prepare & submit Detailed Link Bridge Steelwork Design of Bldg #2 to IC, ER & Employer	28d	14-Dec-15 A	29-Feb-16	-61d	■ Prepare & submit Detailed Link Bridge Steelwork Design of Bldg #2 to IC, ER & Employer																																			
DD211210	Prepare & submit Method of Construction for Bldg #2 Link Bridge Steelwork	22d	26-Jan-16	29-Feb-16	-42d	■ Prepare & submit Method of Construction for Bldg #2 Link Bridge Steelwork																																			
DD211215	IC checks & certifies Method of Construction of Link Bridge Steelwork Design of Bldg #2	14d	01-Mar-16	14-Mar-16	-64d	■ IC checks & certifies Method of Construction of Link Bridge Steelwork Design of Bldg #2																																			
DD211220	IC checks & comments on Detailed Link Bridge Steelwork Design of Bldg #2	14d	01-Mar-16	14-Mar-16	-92d	■ IC checks & comments on Detailed Link Bridge Steelwork Design of Bldg #2																																			
DD211240	Revise & resubmit Detailed Link Bridge Steelwork Design of Bldg #2 to IC, Employer & ER	7d	15-Mar-16	21-Mar-16	-92d	■ Revise & resubmit Detailed Link Bridge Steelwork Design of Bldg #2 to IC, Employer & ER																																			
DD211260	IC checks & certifies Detailed Link Bridge Steelwork Design of Bldg #2	7d	22-Mar-16	28-Mar-16	-92d	■ IC checks & certifies Detailed Link Bridge Steelwork Design of Bldg #2																																			
DD211280	Employer consents to Detailed Link Bridge Steelwork Design of Bldg #2	0d	11-Apr-16		-92d	◆ Employer consents to Detailed Link Bridge Steelwork Design of Bldg #2																																			
Auxiliary Buildings & Facilities #3																																									
Piling Foundation (and Pile Cap) Design																																									
AD Tank & CAPCS Stack (to be deleted/ included in Building #1)																																									
DD311000	Prepare & submit Detailed Piling Design of AD Tank to IC, ER & Employer	0d	11-Feb-15 A	02-Nov-15 A		■ Prepare & submit Detailed Piling Design of AD Tank to IC, ER & Employer																																			
DD311005	Prepare & submit Detailed Piling Design of CAPCS Stack to IC, ER & Employer (to be deleted)	0d	11-Feb-15 A	31-Mar-15 A		■ Prepare & submit Detailed Piling Design of CAPCS Stack to IC, ER & Employer (to be deleted)																																			
DD311015	Prepare & submit Method of Construction for Piling of AD Tank & CAPCS Stack (NA)	0d	11-Feb-15 A	17-Apr-15 A		■ Prepare & submit Method of Construction for Piling of AD Tank & CAPCS Stack (NA)																																			
DD311018	IC checks & certifies Method of Construction of Piling Design of AD Tank & CAPCS Stack (NA)	0d	18-Apr-15 A	08-Sep-15 A		■ IC checks & certifies Method of Construction of Piling Design of AD Tank & CAPCS Stack (NA)																																			
DD311020	IC checks & comments on Detailed Piling Design of AD Tank & CAPCS Stack (NA)	0d	01-Apr-15 A	14-Apr-15 A		■ IC checks & comments on Detailed Piling Design of AD Tank & CAPCS Stack (NA)																																			
DD311040	Revise & resubmit Detailed Piling Design of AD Tank & CAPCS Stack (NA) to IC, Employer & ER	0d	15-Apr-15 A	20-Apr-15 A		■ Revise & resubmit Detailed Piling Design of AD Tank & CAPCS Stack (NA) to IC, Employer & ER																																			
DD311060	IC checks & certifies Detailed Piling Design of AD Tank & CAPCS Stack (NA)	0d	21-Apr-15 A	21-Apr-15 A		■ IC checks & certifies Detailed Piling Design of AD Tank & CAPCS Stack (NA)																																			
DD311080	Employer consents to Detailed Piling Design of AD Tank & CAPCS Stack (NA)	0d		21-May-15 A		◆ Employer consents to Detailed Piling Design of AD Tank & CAPCS Stack (NA)																																			
DD311095	Prepare & submit Detailed Pile Cap Design of AD Tank & CAPCS Stack (NA) to IC, ER & Employer	0d	20-May-15 A	26-Jun-15 A		■ Prepare & submit Detailed Pile Cap Design of AD Tank & CAPCS Stack (NA) to IC, ER & Employer																																			
DD311118	Prepare & submit Method of Construction for Pile Cap of AD Tank & CAPCS Stack (NA)	0d	24-Jun-15 A	10-Aug-15 A		■ Prepare & submit Method of Construction for Pile Cap of AD Tank & CAPCS Stack (NA)																																			
DD311119	IC checks & certifies Method of Construction for Pile Cap of AD Tank & CAPCS Stack (NA)	0d	11-Aug-15 A	02-Nov-15 A		■ IC checks & certifies Method of Construction for Pile Cap of AD Tank & CAPCS Stack (NA)																																			
DD311120	IC checks & comments on Detailed Pile Cap Design of AD Tank & CAPCS Stack (NA)	0d	27-Jun-15 A	13-Jul-15 A		■ IC checks & comments on Detailed Pile Cap Design of AD Tank & CAPCS Stack (NA)																																			
DD311140	Revise & resubmit Detailed Pile Cap Design of AD Tank & CAPCS Stack (NA) to IC, Employer & ER	0d	14-Jul-15 A	04-Aug-15 A		■ Revise & resubmit Detailed Pile Cap Design of AD Tank & CAPCS Stack (NA) to IC, Employer & ER																																			
DD311160	IC checks & certifies Detailed Pile Cap Design of AD Tank & CAPCS Stack (NA)	0d	05-Aug-15 A	06-Aug-15 A		■ IC checks & certifies Detailed Pile Cap Design of AD Tank & CAPCS Stack (NA)																																			
DD311180	Employer consents to Detailed Pile Cap Design of AD Tank & CAPCS Stack (NA)	0d		27-Jul-15 A		◆ Employer consents to Detailed Pile Cap Design of AD Tank & CAPCS Stack (NA)																																			
Ammonia Stripper																																									
DD311010	Prepare & submit Detailed Piling (& Pile Cap) Design of Ammonia Stripper to IC, ER & Employer	0d	04-May-15 A	04-Jun-15 A		■ Prepare & submit Detailed Piling (& Pile Cap) Design of Ammonia Stripper to IC, ER & Employer																																			
DD311082	Prepare & submit Method of Construction for Piling of Ammonia Stripper	0d	24-Jun-15 A	10-Aug-15 A		■ Prepare & submit Method of Construction for Piling of Ammonia Stripper																																			
DD311083	IC checks & certifies Method of Construction of Piling Design of Ammonia Stripper	0d	11-Aug-15 A	08-Sep-15 A		■ IC checks & certifies Method of Construction of Piling Design of Ammonia Stripper																																			
DD311083a	Prepare & submit Method of Construction for Pile Cap of Ammonia Stripper	0d	02-Nov-15 A	26-Nov-15 A		■ Prepare & submit Method of Construction for Pile Cap of Ammonia Stripper																																			
DD311083b	IC checks & certifies Method of Construction of Pile Cap Design of Ammonia Stripper	0d	18-Nov-15 A	27-Nov-15 A		■ IC checks & certifies Method of Construction of Pile Cap Design of Ammonia Stripper																																			
DD311084	IC checks & comments on Detailed Piling (& Pile Cap) Design of Ammonia Stripper	0d	05-Jun-15 A	25-Jun-15 A		■ IC checks & comments on Detailed Piling (& Pile Cap) Design of Ammonia Stripper																																			
DD311086	Revise & resubmit Detailed Piling (& Pile Cap) Design of Ammonia Stripper to IC, Employer & ER	0d	26-Jun-15 A	06-Jul-15 A		■ Revise & resubmit Detailed Piling (& Pile Cap) Design of Ammonia Stripper to IC, Employer & ER																																			
DD311088	IC checks & certifies Detailed Piling (& Pile Cap) Design of Ammonia Stripper	0d	07-Jul-15 A	13-Aug-15 A		■ IC checks & certifies Detailed Piling (& Pile Cap) Design of Ammonia Stripper																																			
DD311090	Employer consents to Detailed Piling (& Pile Cap) Design of Ammonia Stripper	0d		10-Sep-15 A		◆ Employer consents to Detailed Piling (& Pile Cap) Design of Ammonia Stripper																																			
Substructure Design																																									
Weighbridge																																									
DD311117	Prepare & submit Detailed Substructure Design of Weighbridge to IC, ER & Employer	18d	17-Jun-15 A	15-Feb-16	-106d	■ Prepare & submit Detailed Substructure Design of Weighbridge to IC, ER & Employer																																			
DD311400	Prepare & submit Method of Construction for Substructure of Weighbridge	33d	18-Jan-16	07-Mar-16	-60d	■ Prepare & submit Method of Construction for Substructure of Weighbridge																																			
DD311402	IC checks & certifies Method of Construction for Substructure of Weighbridge	14d	23-Mar-16	05-Apr-16	-106d	■ IC checks & certifies Method of Construction for Substructure of Weighbridge																																			
DD311420	IC checks & comments on Detailed Substructure Design of Weighbridge	14d	16-Feb-16	29-Feb-16	-98d	■ IC checks & comments on Detailed Substructure Design of Weighbridge																																			
DD311440	Revise & resubmit Detailed Substructure Design of Weighbridge to IC, Employer & ER	7d	01-Mar-16	07-Mar-16	-98d	■ Revise & resubmit Detailed Substructure Design of Weighbridge to IC, Employer & ER																																			
DD311460	IC checks & certifies Detailed Substructure Design of Weighbridge	7d	08-Mar-16	14-Mar-16	-98d	■ IC checks & certifies Detailed Substructure Design of Weighbridge																																			
DD311480	Employer consents to Detailed Substructure Design of Weighbridge	0d		28-Mar-16	-98d	◆ Employer consents to Detailed Substructure Design of Weighbridge																																			
Biogas Cleaning, Storage and Distribution System																																									
DD311105	Prepare & submit Detailed Substructure Design of Biogas Storage Tank to IC, ER & Employer	0d	15-Aug-15 A	21-Dec-15 A		■ Prepare & submit Detailed Substructure Design of Biogas Storage Tank to IC, ER & Employer																																			

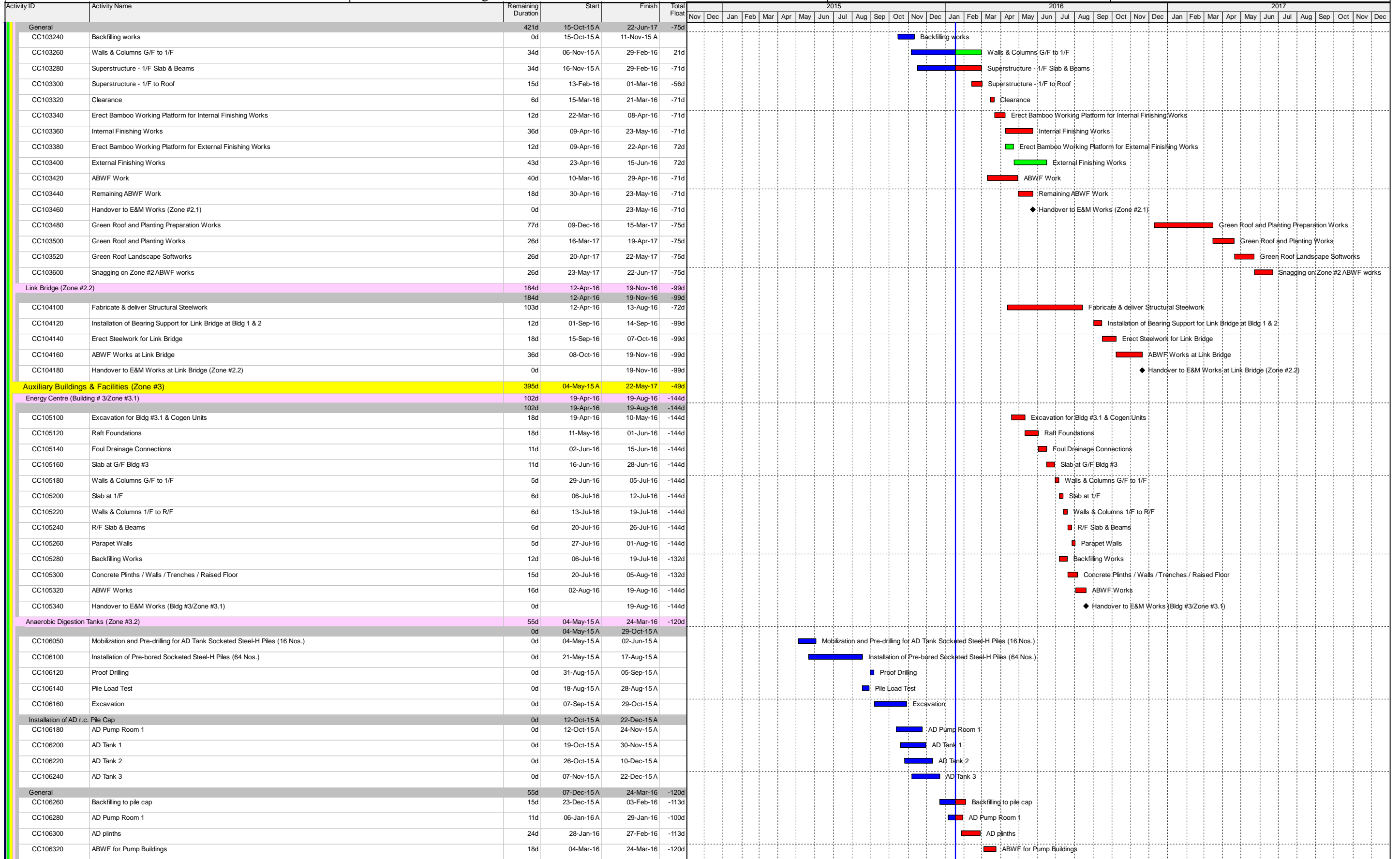
Activity ID | Activity Name | Remaining Duration | Start | Finish | Total Float | Gantt Chart (Nov 2015 - Dec 2017) | Description

Activity ID	Activity Name	Remaining Duration	Start	Finish	Total Float	2015												2016												2017																																			
						Nov	Dec	Jan	Feb	Mar	Apr	May	Jun	Jul	Aug	Sep	Oct	Nov	Dec	Jan	Feb	Mar	Apr	May	Jun	Jul	Aug	Sep	Oct	Nov	Dec	Jan	Feb	Mar	Apr	May	Jun	Jul	Aug	Sep	Oct	Nov	Dec																						
DE120450	Prepare & submit Detailed Design of Pre-treatment System to IC, ER & Employer	0d	02-Jun-15 A	11-Aug-15 A		Prepare & submit Detailed Design of Pre-treatment System to IC, ER & Employer																																																											
DE120500	IC checks & comments on Detailed Design of Pre-Treatment System	0d	12-Aug-15 A	20-Aug-15 A		IC checks & comments on Detailed Design of Pre-Treatment System																																																											
DE120550	Revise & resubmit Detailed Design of Pre-Treatment System to IC, Employer & ER	0d	21-Aug-15 A	15-Sep-15 A		Revise & resubmit Detailed Design of Pre-Treatment System to IC, Employer & ER																																																											
DE120600	IC checks & certifies Detailed Design of Pre-treatment System	0d	05-Sep-15 A	25-Sep-15 A		IC checks & certifies Detailed Design of Pre-treatment System																																																											
DE120650	Employer consents to Detailed Design of Pre-treatment System	0d	18-Jan-16*		-39d	Employer consents to Detailed Design of Pre-treatment System																																																											
Anaerobic Digestion (AD) Treatment System																																																																	
		0d	07-Feb-15 A	21-Dec-15 A																																																													
DE130200	Prepare & make AD Equipment & Performance Submission to IC, ER & Employer	0d	07-Feb-15 A	21-Dec-15 A		Prepare & make AD Equipment & Performance Submission to IC, ER & Employer																																																											
DE130250	IC checks & comments on AD Equipment	0d	07-Feb-15 A	05-Mar-15 A		IC checks & comments on AD Equipment																																																											
DE130300	Revise & resubmit AD Equipment to IC, Employer & ER	0d	10-Mar-15 A	13-Mar-15 A		Revise & resubmit AD Equipment to IC, Employer & ER																																																											
DE130350	IC checks & certifies AD Equipment	0d	06-Mar-15 A	09-Mar-15 A		IC checks & certifies AD Equipment																																																											
DE130400	Employer consents to AD Equipment	0d		12-Oct-15 A		Employer consents to AD Equipment																																																											
DE130450	Prepare & submit Detailed Design of AD Treatment System to IC, ER & Employer	0d	18-May-15 A	24-Jul-15 A		Prepare & submit Detailed Design of AD Treatment System to IC, ER & Employer																																																											
DE130500	IC checks & comments on Detailed Design of AD treatment System	0d	25-Jul-15 A	06-Aug-15 A		IC checks & comments on Detailed Design of AD treatment System																																																											
DE130550	Revise & resubmit Detailed Design of AD Treatment System to IC, Employer & ER	0d	07-Aug-15 A	24-Aug-15 A		Revise & resubmit Detailed Design of AD Treatment System to IC, Employer & ER																																																											
DE130600	IC checks & certifies AD Treatment System	0d	14-Aug-15 A	04-Sep-15 A		IC checks & certifies AD Treatment System																																																											
DE130650	Employer consents to Detailed Design of AD Treatment System	0d		21-Dec-15 A		Employer consents to Detailed Design of AD Treatment System																																																											
Biogas Cleaning, Storage and Distribution System																																																																	
		0d	28-Jan-15 A	25-Feb-16	-78d																																																												
DE140200	Prepare & make Biogas Equipment & Performance Submission to IC, ER & Employer	0d	28-Jan-15 A	23-Feb-15 A		Prepare & make Biogas Equipment & Performance Submission to IC, ER & Employer																																																											
DE140250	IC checks & comments on Biogas Cleaning & Storage Equipment	0d	24-Feb-15 A	06-Mar-15 A		IC checks & comments on Biogas Cleaning & Storage Equipment																																																											
DE140300	Revise & resubmit Biogas Cleaning & Storage Equipment to IC, Employer & ER	0d	07-Mar-15 A	13-Mar-15 A		Revise & resubmit Biogas Cleaning & Storage Equipment to IC, Employer & ER																																																											
DE140350	IC checks & certifies Biogas Cleaning & Storage Equipment	0d	14-Mar-15 A	16-Mar-15 A		IC checks & certifies Biogas Cleaning & Storage Equipment																																																											
DE140400	Employer consents to Biogas Cleaning & Storage Equipment	0d		25-Feb-16	-98d	Employer consents to Biogas Cleaning & Storage Equipment																																																											
DE140450	Prepare & submit Detailed Design of Biogas System to IC, ER & Employer	0d	02-Jun-15 A	23-Oct-15 A		Prepare & submit Detailed Design of Biogas System to IC, ER & Employer																																																											
DE140500	IC checks & comments on Detailed Design of Biogas System	0d	20-Sep-15 A	09-Nov-15 A		IC checks & comments on Detailed Design of Biogas System																																																											
DE140550	Revise & resubmit Detailed Design of Biogas System to IC, Employer & ER	0d	06-Oct-15 A	10-Dec-15 A		Revise & resubmit Detailed Design of Biogas System to IC, Employer & ER																																																											
DE140600	IC checks & certifies Biogas Cleaning & Storage System	0d	15-Oct-15 A	15-Dec-15 A		IC checks & certifies Biogas Cleaning & Storage System																																																											
DE140650	Employer consents to Biogas Cleaning & Storage System	0d		07-Jan-16 A		Employer consents to Biogas Cleaning & Storage System																																																											
Combined Heat Recovery and Power (CHP) Generation System																																																																	
		0d	15-Jan-15 A	07-Dec-15 A																																																													
DE150200	Prepare & make CHP Equipment & Performance Submission to IC, ER & Employer	0d	15-Jan-15 A	26-Jan-15 A		Prepare & make CHP Equipment & Performance Submission to IC, ER & Employer																																																											
DE150250	IC checks & comments on CHP Equipment	0d	27-Jan-15 A	06-Feb-15 A		IC checks & comments on CHP Equipment																																																											
DE150300	Revise & resubmit CHP Equipment to IC, Employer & ER	0d	17-Feb-15 A	25-Feb-15 A		Revise & resubmit CHP Equipment to IC, Employer & ER																																																											
DE150350	IC checks & certifies CHP Equipment	0d	26-Feb-15 A	09-Mar-15 A		IC checks & certifies CHP Equipment																																																											
DE150400	Employer consents to CHP Equipment	0d		05-Jun-15 A		Employer consents to CHP Equipment																																																											
DE150450	Prepare & submit Detailed Design of CHP Generation System to IC, ER & Employer	0d	25-May-15 A	06-Jul-15 A		Prepare & submit Detailed Design of CHP Generation System to IC, ER & Employer																																																											
DE150500	IC checks & comments on Detailed Design of CHP Generation System	0d	07-Jul-15 A	20-Jul-15 A		IC checks & comments on Detailed Design of CHP Generation System																																																											
DE150550	Revise & resubmit Detailed Design of CHP Generation System to IC, Employer & ER	0d	21-Jul-15 A	27-Oct-15 A		Revise & resubmit Detailed Design of CHP Generation System to IC, Employer & ER																																																											
DE150600	IC checks & certifies CHP Generation System	0d	25-Sep-15 A	12-Nov-15 A		IC checks & certifies CHP Generation System																																																											
DE150650	Employer consents to CHP Generation System	0d		07-Dec-15 A		Employer consents to CHP Generation System																																																											
Continuous Emission Monitoring System (CEMS)																																																																	
		0d	27-Feb-15 A	17-Dec-15 A																																																													
DE180200	Prepare & make CEMS Equipment & Performance Submission to IC, ER & Employer	0d	27-Feb-15 A	25-Mar-15 A		Prepare & make CEMS Equipment & Performance Submission to IC, ER & Employer																																																											
DE180250	IC checks & comments on CEMS Equipment	0d	26-Mar-15 A	15-Apr-15 A		IC checks & comments on CEMS Equipment																																																											
DE180300	Revise & resubmit CEMS Equipment to IC, Employer & ER	0d	09-Apr-15 A	15-Apr-15 A		Revise & resubmit CEMS Equipment to IC, Employer & ER																																																											
DE180350	IC checks & certifies CEMS Equipment	0d	16-Apr-15 A	20-Apr-15 A		IC checks & certifies CEMS Equipment																																																											
DE180400	Employer consents to CEMS Equipment	0d		10-Jun-15 A		Employer consents to CEMS Equipment																																																											
DE180450	Prepare & submit Detailed Design of CEMS to IC, ER & Employer	0d	10-Apr-15 A	25-Aug-15 A		Prepare & submit Detailed Design of CEMS to IC, ER & Employer																																																											
DE180500	IC Checks & comments on Detailed Design of CEMS	0d	26-Aug-15 A	11-Sep-15 A		IC Checks & comments on Detailed Design of CEMS																																																											
DE180550	Revise & resubmit Detailed Design of CEMS to IC, Employer & ER	0d	12-Sep-15 A	13-Oct-15 A		Revise & resubmit Detailed Design of CEMS to IC, Employer & ER																																																											
DE180600	IC checks & certifies CEMS	0d	14-Oct-15 A	06-Nov-15 A		IC checks & certifies CEMS																																																											
DE180650	Employer consents to CEMS	0d		17-Dec-15 A		Employer consents to CEMS																																																											



Main project schedule table with columns for Activity ID, Activity Name, Remaining Duration, Start, Finish, Total Float, and monthly progress bars for 2015, 2016, and 2017.

Activity ID	Activity Name	Remaining Duration	Start	Finish	Total Float	2015												2016												2017													
						Nov	Dec	Jan	Feb	Mar	Apr	May	Jun	Jul	Aug	Sep	Oct	Nov	Dec	Jan	Feb	Mar	Apr	May	Jun	Jul	Aug	Sep	Oct	Nov	Dec	Jan	Feb	Mar	Apr	May	Jun	Jul	Aug	Sep	Oct	Nov	Dec
PR250180	Chilled Water Circulation Pumps	83d	17-Mar-16	19-Jul-16	-50d																																						
PR250200	Fan coil and air handling units	83d	17-Mar-16	19-Jul-16	-50d																																						
PR250210	Fire Services System Equipment	81d	12-Apr-16	05-Aug-16	-106d																																						
PR250220	Plumbing and Drainage System Equipment	81d	12-Feb-16	10-Jun-16	-42d																																						
PR250230	ELV System Equipment	81d	12-Apr-16	05-Aug-16	-20d																																						
CIVIL AND STRUCTURAL WORKS																																											
General																																											
0d 30-Mar-15 A 10-Apr-15 A																																											
CC100010	Permission / Comments from WSD before Commencement of works	0d	30-Mar-15 A	10-Apr-15 A																																							
Waste Receiving, Pre-treatment & Administration Building #1 (Zone #1)																																											
Substructure at Grid 6-15/H-K.5 - Part A (Adm. Building)																																											
79d 02-Sep-15 A 26-Apr-16 -122d																																											
CC100100	Excavation by Open Cut (Grid 6-15 / H-K.5 - Part A)	0d	02-Sep-15 A	12-Dec-15 A																																							
CC100110	Installation of Earthing (Grid 6-15 / H-K.5 - Part A)	8d	11-Jan-16 A	26-Jan-16	-122d																																						
CC100120	Installation of Ground Beams and Slabs (Grid 6-15 / H-K.5 - Part A)	45d	27-Jan-16	22-Mar-16	-122d																																						
CC100125	Wall & Slab to +6.95mPD (Grid 6-15 / H-K.5 - Part A)	26d	23-Mar-16	26-Apr-16	-122d																																						
Substructure at Grid 6-10/L-Q - Part B (WWTP)																																											
61d 30-Nov-15 A 05-Apr-16 -117d																																											
CC101300	Excavation by Open Cut (Grid 6-10 / L-Q - Part B)	0d	30-Nov-15 A	09-Jan-16 A																																							
CC101310	Installation of Earthing (Grid 6-10 / L-Q - Part B)	0d	23-Dec-15 A	11-Jan-16 A																																							
CC101320	Installation of Ground Beams and Slabs (Grid 6-10 / L-Q - Part B)	61d	09-Jan-16 A	05-Apr-16	-117d																																						
Deep Bunker																																											
93d 14-Dec-15 A 13-May-16 -142d																																											
CC101100	General Excavation by Open Cut to Deep Bunker	0d	14-Dec-15 A	15-Jan-16 A																																							
CC101120	Excavate and Drive Type III Sheet Pile forming planking wall for ELS (6 Types)	18d	16-Jan-16 A	06-Feb-16	-142d																																						
CC101140	Further excavate for Deep Bunker incl. Mass Concrete Fill	24d	11-Feb-16	09-Mar-16	-142d																																						
CC101150	Construct Deep Bunker Footing	28d	25-Feb-16	31-Mar-16	-142d																																						
CC101160	Construct Deep Bunker r.c. structure	51d	10-Mar-16	13-May-16	-142d																																						
CC101180	Complete Mass Fill to Lev. Approx. +6.30m.P.D.	10d	23-Apr-16	05-May-16	-141d																																						
Substructure at Grid 10-15/K.5-Q - Part C (Bunker & Influence Zone)																																											
60d 14-Dec-15 A 30-Jun-16 -129d																																											
CC101200	Excavation by Open Cut to Grid 10-15/K.5-Q (Part C incl. Influence Zone)	0d	14-Dec-15 A	15-Jan-16 A																																							
CC101220	Installation of Ground Beams and Slabs Grid 10-15/K.5-Q (Part C incl. Influence Zone)	60d	19-Apr-16	30-Jun-16	-129d																																						
CC101240	Water Tank - Int. Proc. Buffer Water and Int. Susp. Buffer Water @+3.95mPD	28d	28-May-16	30-Jun-16	-129d																																						
Suspension Buffer Tank																																											
2d 08-Aug-15 A 19-Jan-16 -80d																																											
CC102000	Installation of Pre-bored Socketed Steel-H Piles (11 Nos. for SBT, Testing with AD Tank Piles)	0d	08-Aug-15 A	19-Sep-15 A																																							
CC102115	Excavation for Suspension Buffer Tank Pile Cap	0d	02-Nov-15 A	06-Nov-15 A																																							
CC102120	Base of Suspension Buffer Tank (Pile Cap)	2d	06-Nov-15 A	19-Jan-16	-80d																																						
Superstructure at Grid 6-15/H-K.5 - Part A (Adm. Building, Workshop & F.S. Pump Rm.)																																											
334d 05-Mar-16 22-Apr-17 -26d																																											
CC100140	Underground Drainage Work (Grid 6-15 / H-K.5 - Part A)	15d	23-Mar-16	13-Apr-16	-84d																																						
CC100530	Wall and Column G/F to +12.00m.P.D. (Part A)	65d	05-Mar-16	26-May-16	-142d																																						
CC100535	Construct Water Tanks - F.S. Water & Sprinkler @+7.65mPD	25d	05-Apr-16	04-May-16	-130d																																						
CC100540	Floor Slabs and Beam at +12.00m.P.D. (Part A)	60d	18-Mar-16	02-Jun-16	-142d																																						
CC100550	Wall and Column from +12.00m.P.D. to +17.20m.P.D. (Part A)	60d	29-Mar-16	10-Jun-16	-142d																																						
CC100560	Floor Slabs and Beam at +17.20m.P.D. (Part A)	60d	06-Apr-16	17-Jun-16	-142d																																						
CC100570	Wall and Column from +17.20m.P.D. to +22.60m.P.D. (Part A)	60d	13-Apr-16	24-Jun-16	-142d																																						
CC100580	Fabricate & Deliver Roof Structural Steelwork (Part A)	51d	13-May-16	14-Jul-16	-130d																																						
CC100590	Erect Roof Steelwork at +23.379mPD (Part A)	50d	29-Jul-16	26-Sep-16	-142d																																						
CC100600	Roof at +22.60m.P.D. (Part A)	25d	02-Jun-16	02-Jul-16	-142d																																						
CC100610	Clearance of Internal Area of G/F (Part A)	6d	16-Jun-16	22-Jun-16	-62d																																						
CC100620	Erect bamboo working platform at Internal Area of G/F (Part A)	12d	23-Jun-16	07-Jul-16	-62d																																						
CC100630	ABWF Works at G/F (Part A)	24d	08-Jul-16	04-Aug-16	-62d																																						
CC100640	Clearance of Internal Area of Mezz Lev. & 1/F (Part A)	9d	08-Jul-16	18-Jul-16	-109d																																						
CC100650	Erect bamboo working platform at Internal Area of Mezz Lev. & 1.F (Part A)	12d	19-Jul-16	01-Aug-16	-109d																																						
CC100660	ABWF Works at 1/F to R/F (Part A)	40d	09-Sep-16	28-Oct-16	-142d																																						
CC100670	Removal of Scaffolding and Working Platform (Part A)	0d		28-Oct-16	-35d																																						



Activity ID	Activity Name	Remaining Duration	Start	Finish	Total Float	2015												2016												2017													
						Nov	Dec	Jan	Feb	Mar	Apr	May	Jun	Jul	Aug	Sep	Oct	Nov	Dec	Jan	Feb	Mar	Apr	May	Jun	Jul	Aug	Sep	Oct	Nov	Dec	Jan	Feb	Mar	Apr	May	Jun	Jul	Aug	Sep	Oct	Nov	Dec
SW253100	Handover plant room and cable duct to Telecom Company	60d	31-Oct-16	11-Jan-17	-96d																																						
SW253120	Telecom. Company to install cable and Equipment	5d	31-Oct-16	04-Nov-16	-83d																																						
SW253130	PCCW Connection	43d	07-Nov-16	09-Jan-17	-83d																																						
SW253130	PCCW Connection	22d	21-Dec-16	11-Jan-17	-119d																																						
Others		75d	19-Mar-15 A	17-Jan-17	-31d																																						
SW260100	Registration of Pressure Vessels	75d	19-Mar-15 A	17-Jan-17	-31d																																						
SW260120	Approval for installation of furnaces, ovens or chimneys	75d	19-Mar-15 A	17-Jan-17	-31d																																						
SW260160	Chemical Waste Producer Registration (Site)	20d	29-Sep-16	27-Oct-16	24d																																						
SW260160	Chemical Waste Producer Registration (Site)	0d	19-Mar-15 A	29-Apr-15 A																																							
SW260162	Chemical Waste Producer Registration (Plant)	20d	16-Dec-16	17-Jan-17	-102d																																						
SW260170	Storage Approval for Chemicals (Control of Chemicals Regulation)	20d	16-Dec-16	17-Jan-17	-102d																																						
TENDERING & SUBLETING OF E & M SYSTEM WORK PACKAGES		265d	02-May-15 A	08-Oct-16	358d																																						
Electrical & Control Systems		265d	02-May-15 A	08-Oct-16	358d																																						
SC500100	Supply and Installation of HV/LV/Earthing Transformers and HV Panel	265d	02-May-15 A	08-Oct-16	358d																																						
SC500200	Supply and Installation of HV/LV/Earthing Transformers and HV Panel	67d	14-Nov-15 A	24-Mar-16	-51d																																						
SC500200	Installation of LV Switchboard and MCC	57d	11-Jun-16*	06-Aug-16	-120d																																						
SC500300	Installation of Capacity Bank & UPS	57d	13-Aug-16*	08-Oct-16	-111d																																						
SC500400	Supply and Installation of Emergency Genset	57d	02-Jun-16*	28-Jul-16	-96d																																						
SC500500	Installation of Active Lightning Protection System	57d	13-Feb-16*	09-Apr-16	540d																																						
SC500600	Installation of Cabling, containment, accessories, lightning...	57d	11-Jun-16*	06-Aug-16	-137d																																						
SC500700	Installation of local panels	57d	24-May-16*	19-Jul-16	-82d																																						
SC500800	Installation of Control system (SCADA, PLC units, control room equipment)	0d	04-May-15 A	30-Jun-15 A																																							
SC500900	Supply and Installation of ELV (including intruder detection)	57d	16-May-16*	11-Jul-16	-112d																																						
SC501000	Termination of Fibre Optic	57d	13-Aug-16*	08-Oct-16	-111d																																						
SC501100	Installation of telecoms and Installation of MEGALINK	57d	13-Aug-16*	08-Oct-16	-111d																																						
SC501200	Installation of underground Earthing grid	0d	02-May-15 A	19-Jun-15 A																																							
Mechanical and Piping		242d	01-Jun-15 A	15-Sep-16	14d																																						
SC511100	Installation of Anaerobic Digestion Tanks No. 1, 2, 3 and Installation of Intermediate Digestate Tank	242d	01-Jun-15 A	15-Sep-16	14d																																						
SC511100	Installation of Anaerobic Digestion Tanks No. 1, 2, 3 and Installation of Intermediate Digestate Tank	43d	11-Jan-16 A	29-Feb-16	-151d																																						
SC511200	Installation of Biogas Storage Tank	57d	29-Jun-16*	24-Aug-16	-138d																																						
SC511300	Installation of Overhead Grabbing System	57d	24-May-16*	19-Jul-16	-80d																																						
SC511400	Installation of Weighbridge (excluding Gatehouse equipment)	57d	13-Apr-16*	08-Jun-16	-15d																																						
SC511500	Installation of Vehicle Washing System / Bin Handling Machine / Water Canon System	57d	19-Mar-16*	14-May-16	-17d																																						
SC511600	Installation of AD Treatment System (Excl. AD & IDT Tank), Install. Biogas Storage & Dist. System (Excl. Biogas Holder)	57d	04-Feb-16*	31-Mar-16	-13d																																						
SC511700	Installation of Pre-treatment System, Wastewater Treatment System, Dewatering and Composting System	57d	05-Mar-16*	30-Apr-16	-57d																																						
SC511800	Installation of CAPCS equipment	57d	24-Feb-16*	20-Apr-16	-76d																																						
SC511900	Supply and Installation of Roller Shutter, Supply and Installation of Rapid Door (indoor)	57d	21-Jun-16*	16-Aug-16	-158d																																						
SC512000	Supply and Installation of Rapid Door (outdoor & indoor higher than 6.5m)	57d	21-Apr-16*	16-Jun-16	-97d																																						
SC512100	Installation of Process Clean Water Pump, Installation of Hot Water Pump	57d	19-Mar-16*	14-May-16	-71d																																						
SC512200	Installation of Air Compressor Units, Installation of Compress Air Pipeworks	57d	10-Mar-16*	05-May-16	94d																																						
SC512300	Installation of SS Pipework (Process Water & Process Clean Water, Hot Water, WWTP, ASP)	57d	10-Mar-16*	05-May-16	-62d																																						
SC512400	Installation of SS Pipework (Vehicle Truck Wash, Reclaim Water, Pre-treatment Sys.)	57d	19-Mar-16*	14-May-16	-17d																																						
SC512500	Installation of SS Pipework (AD, Biogas, Dewatering & Composting Sys.)	57d	28-Jan-16*	24-Mar-16	-4d																																						
SC512600	Installation of Double Containment (CAPCS, WWTP)	57d	10-Mar-16*	05-May-16	59d																																						
SC512700	Installation of uPVC Pipeworks (WWTP, reclaim water, Dewatering, Composting)	57d	10-Mar-16*	05-May-16	-14d																																						
SC512800	Supply and Installation of GRP Platform, ladder, staircases, etc	57d	01-Jun-16*	27-Jul-16	-77d																																						
SC512900	Supply and Installation of pipe bridge (Structural Steel)	0d	04-Sep-15 A	20-Nov-15 A																																							
SC513000	Supply & Installation of miscellaneous steel works (racks, frames...)	57d	18-Jan-16*	14-Mar-16	65d																																						
SC513100	Installation of GRP Ductworks (CAPCS)	57d	30-Jun-16*	25-Aug-16	-51d																																						
SC513200	Supply and Installation of Insulation	29d	13-Nov-15 A	15-Feb-16	90d																																						
SC513300	Supply and Installation of GRP Cover	57d	04-Mar-16*	29-Apr-16	-32d																																						
SC513400	Installation of Heat Recovery and Power Generation System	57d	09-Apr-16*	04-Jun-16	-6d																																						
SC513500	Installation of CEMS	57d	21-Jul-16*	15-Sep-16	14d																																						
SC513600	Installation of Ammonia Stripping Plant	57d	19-Jan-16*	15-Mar-16	-17d																																						

Activity ID	Activity Name	Remaining Duration	Start	Finish	Total Float	2015												2016												2017											
						Nov	Dec	Jan	Feb	Mar	Apr	May	Jun	Jul	Aug	Sep	Oct	Nov	Dec	Jan	Feb	Mar	Apr	May	Jun	Jul	Aug	Sep	Oct	Nov	Dec	Jan	Feb	Mar	Apr	May	Jun	Jul	Aug	Sep	Oct
SC513700	Supply and Installation of Lifting Appliance	0d	01-Jun-15 A	01-Dec-15 A		Supply and Installation of Lifting Appliance																																			
Building Services																																									
SC525100	Installation of Plumbing and Drainage (external U/G piping excluded)	57d	27-Jul-15 A	19-Jul-16	-93d	Installation of Plumbing and Drainage (external U/G piping excluded)																																			
SC525200	Installation of MVAC	57d	27-Jul-15 A	19-Jul-16	-93d	Installation of MVAC																																			
SC525300	Installation of Fire Services (exclude U/G piping)	57d	24-May-16	19-Jul-16	-158d	Installation of Fire Services (exclude U/G piping)																																			
SC525400	Installation of Building Electrical & External Lighting	57d	24-May-16	19-Jul-16	-93d	Installation of Building Electrical & External Lighting																																			
SC525500	Supply & Installation of Lift	0d	27-Jul-15 A	30-Nov-15 A		Supply & Installation of Lift																																			
METHOD STATEMENT (M.S.) OF E & M INSTALLATION WORKS (INCL. RE-SUBMISSIONS)																																									
Electrical & Control Systems																																									
MS601100	Submit M.S. for Installation of HV/LV/Earthing Transformers and HV Panel	0d	08-Aug-15 A	26-Nov-16	321d	Submit M.S. for Installation of HV/LV/Earthing Transformers and HV Panel																																			
MS601200	IC Certifies M.S. for Installation of HV/LV/Earthing Transformers and HV Panel	35d	03-Mar-16	06-Apr-16	-51d	IC Certifies M.S. for Installation of HV/LV/Earthing Transformers and HV Panel																																			
MS601300	ER Review M.S. for Installation of HV/LV/Earthing Transformers and HV Panel	14d	07-Apr-16	20-Apr-16	-44d	ER Review M.S. for Installation of HV/LV/Earthing Transformers and HV Panel																																			
MS601400	Submit M.S. for Installation of LV Switchboard and MCC	0d	08-Aug-15 A	07-Nov-16	340d	Submit M.S. for Installation of LV Switchboard and MCC																																			
MS601500	IC Certifies M.S. for Installation of LV Switchboard and MCC	35d	01-Jul-16	04-Aug-16	-120d	IC Certifies M.S. for Installation of LV Switchboard and MCC																																			
MS601600	ER Review M.S. for Installation of LV Switchboard and MCC	14d	05-Aug-16	18-Aug-16	-113d	ER Review M.S. for Installation of LV Switchboard and MCC																																			
MS601700	Submit M.S. for Installation of Capacity Bank & UPS	0d	08-Aug-15 A	07-Nov-16	340d	Submit M.S. for Installation of Capacity Bank & UPS																																			
MS601800	IC Certifies M.S. for Installation of Capacity Bank & UPS	35d	02-Sep-16	06-Oct-16	-111d	IC Certifies M.S. for Installation of Capacity Bank & UPS																																			
MS601900	ER Review M.S. for Installation of Capacity Bank & UPS	14d	07-Oct-16	20-Oct-16	-104d	ER Review M.S. for Installation of Capacity Bank & UPS																																			
MS602000	Submit M.S. for Supply and Installation of Emergency Genset	0d	08-Aug-15 A	07-Nov-16	340d	Submit M.S. for Supply and Installation of Emergency Genset																																			
MS602100	IC Certifies M.S. for Installation of Emergency Genset	35d	20-Sep-16	24-Oct-16	-96d	IC Certifies M.S. for Installation of Emergency Genset																																			
MS602200	ER Review M.S. for Installation of Emergency Genset	14d	25-Oct-16	07-Nov-16	-89d	ER Review M.S. for Installation of Emergency Genset																																			
MS602300	Submit M.S. for Installation of Active Lightning Protection System	0d	08-Aug-15 A	07-Nov-16	340d	Submit M.S. for Installation of Active Lightning Protection System																																			
MS602400	IC Certifies M.S. for Installation of Active Lightning Protection System	35d	04-Mar-16	07-Apr-16	540d	IC Certifies M.S. for Installation of Active Lightning Protection System																																			
MS602500	ER Review M.S. for Installation of Active Lightning Protection System	14d	08-Apr-16	21-Apr-16	540d	ER Review M.S. for Installation of Active Lightning Protection System																																			
MS602600	Submit M.S. for Installation of Cabling, containment, accessories, lightning...	0d	08-Aug-15 A	07-Nov-16	340d	Submit M.S. for Installation of Cabling, containment, accessories, lightning...																																			
MS602700	IC Certifies M.S. for Installation of Cabling, containment, accessories, lightning...	35d	01-Jul-16	04-Aug-16	-137d	IC Certifies M.S. for Installation of Cabling, containment, accessories, lightning...																																			
MS602800	ER Review M.S. for Installation of Cabling, containment, accessories, lightning...	14d	05-Aug-16	18-Aug-16	-130d	ER Review M.S. for Installation of Cabling, containment, accessories, lightning...																																			
MS602900	Submit M.S. for Installation of local panels	0d	08-Aug-15 A	07-Nov-16	340d	Submit M.S. for Installation of local panels																																			
MS603000	IC Certifies M.S. for Installation of local panels	35d	13-Jun-16	17-Jul-16	-82d	IC Certifies M.S. for Installation of local panels																																			
MS603100	ER Review M.S. for Installation of local panels	14d	18-Jul-16	31-Jul-16	-75d	ER Review M.S. for Installation of local panels																																			
MS603200	Submit M.S. for Installation of Control system (SCADA, PLC units, control room equipment)	0d	08-Aug-15 A	07-Nov-16	340d	Submit M.S. for Installation of Control system (SCADA, PLC units, control room equipment)																																			
MS603300	IC Certifies M.S. for Installation of Control system (SCADA, PLC units, control room equipment)	35d	15-Apr-16	19-May-16	-23d	IC Certifies M.S. for Installation of Control system (SCADA, PLC units, control room equipment)																																			
MS603400	ER Review M.S. for Installation of Control system (SCADA, PLC units, control room equipment)	14d	20-May-16	02-Jun-16	-16d	ER Review M.S. for Installation of Control system (SCADA, PLC units, control room equipment)																																			
MS603500	Submit M.S. for Installation of ELV (including intruder detection) and Termination of Fibre Optic	0d	08-Aug-15 A	07-Nov-16	340d	Submit M.S. for Installation of ELV (including intruder detection) and Termination of Fibre Optic																																			
MS603600	IC Certifies M.S. for Installation of ELV (including intruder detection)	35d	03-Sep-16	07-Oct-16	-112d	IC Certifies M.S. for Installation of ELV (including intruder detection)																																			
MS603700	ER Review M.S. for Supply and Installation of ELV (including intruder detection)	14d	08-Oct-16	21-Oct-16	-105d	ER Review M.S. for Supply and Installation of ELV (including intruder detection)																																			
MS603800	Submit M.S. for Termination of Fibre Optic	0d	08-Aug-15 A	07-Nov-16	340d	Submit M.S. for Termination of Fibre Optic																																			
MS603900	IC Certifies M.S. for Termination of Fibre Optic	35d	02-Sep-16	06-Oct-16	-111d	IC Certifies M.S. for Termination of Fibre Optic																																			
MS604000	ER Review M.S. for Termination of Fibre Optic	14d	07-Oct-16	20-Oct-16	-104d	ER Review M.S. for Termination of Fibre Optic																																			
MS604100	Submit M.S. for Installation of telecoms and Installation of MEGALINK	0d	08-Aug-15 A	07-Nov-16	340d	Submit M.S. for Installation of telecoms and Installation of MEGALINK																																			
MS604200	IC Certifies M.S. for Installation of telecoms and Installation of MEGALINK	35d	02-Sep-16	06-Oct-16	-111d	IC Certifies M.S. for Installation of telecoms and Installation of MEGALINK																																			
MS604300	ER Review M.S. for Installation of telecoms and Installation of MEGALINK	14d	07-Oct-16	20-Oct-16	-104d	ER Review M.S. for Installation of telecoms and Installation of MEGALINK																																			
MS604400	Submit M.S. for Installation of underground Earthing grid	0d	27-Aug-15 A	08-Sep-15 A		Submit M.S. for Installation of underground Earthing grid																																			
MS604500	IC Certifies M.S. for Installation of underground Earthing grid	0d	10-Aug-15 A	24-Aug-15 A		IC Certifies M.S. for Installation of underground Earthing grid																																			
MS604600	ER Review M.S. for Installation of underground Earthing grid	0d	27-Aug-15 A	08-Sep-15 A		ER Review M.S. for Installation of underground Earthing grid																																			
Mechanical and Piping																																									
MS611100	Submit M.S. for Installation of Anaerobic Digestion Tanks No. 1, 2, 3 and Installation of Intermediate Digestate Tank	0d	18-Jan-16	26-Nov-16	-39d	Submit M.S. for Installation of Anaerobic Digestion Tanks No. 1, 2, 3 and Installation of Intermediate Digestate Tank																																			
MS611200	IC Certifies M.S. for Install. of AD Tanks No. 1, 2, 3 and Install. of Intermediate Digestate Tank	35d	02-Feb-16	07-Mar-16	-151d	IC Certifies M.S. for Install. of AD Tanks No. 1, 2, 3 and Install. of Intermediate Digestate Tank																																			
MS611300	ER Review M.S. for Install. of Anaerobic Digestion Tanks No. 1, 2, 3 and Installation of Intermediate Digestate Tank	14d	08-Mar-16	21-Mar-16	-144d	ER Review M.S. for Install. of Anaerobic Digestion Tanks No. 1, 2, 3 and Installation of Intermediate Digestate Tank																																			
MS611400	Submit M.S. for Installation of Biogas Storage Tank	0d	18-Jan-16	26-Nov-16	-39d	Submit M.S. for Installation of Biogas Storage Tank																																			

Activity ID, Activity Name, Remaining Duration, Start, Finish, Total Float, and monthly Gantt chart for activities from 2015 to 2017.

Activity ID	Activity Name	Remaining Duration	Start	Finish	Total Float	2015												2016												2017											
						Nov	Dec	Jan	Feb	Mar	Apr	May	Jun	Jul	Aug	Sep	Oct	Nov	Dec	Jan	Feb	Mar	Apr	May	Jun	Jul	Aug	Sep	Oct	Nov	Dec	Jan	Feb	Mar	Apr	May	Jun	Jul	Aug	Sep	Oct
Building #2 (Composting & Maturation Building)																																									
EMBS2000	Building #2 MVAC System	80d	08-Aug-16	11-Nov-16	-47d	[Gantt bar]																																			
EMBS2050	Building #2 Fire Services System	100d	08-Aug-16	05-Dec-16	-117d	[Gantt bar]																																			
EMBS2100	Building #2 Plumbing & Drainage System	80d	08-Aug-16	11-Nov-16	-97d	[Gantt bar]																																			
Building #3 (Energy Centre)																																									
EMBS3000	Building #3 MVAC System	60d	19-Sep-16	29-Nov-16	-62d	[Gantt bar]																																			
EMBS3050	Building #3 Fire Services System	110d	20-Aug-16	31-Dec-16	-138d	[Gantt bar]																																			
EMBS3100	Building #3 Plumbing & Drainage System	70d	04-Oct-16	24-Dec-16	-134d	[Gantt bar]																																			
Anaerobic Digesters Area																																									
EMBS4000	Anaerobic Digesters Area MVAC System	65d	27-Aug-16	14-Nov-16	-49d	[Gantt bar]																																			
EMBS4050	Anaerobic Digesters Area Fire Services System	68d	26-Sep-16	15-Dec-16	-126d	[Gantt bar]																																			
EMBS4100	Anaerobic Digesters Area Plumbing & Drainage System	50d	05-Oct-16	02-Dec-16	-115d	[Gantt bar]																																			
Biogas Cleaning & Storage Tank, Desulphurization/Biogas Plant Rm., Desulphurization Tank																																									
EMBS5000	Biogas Area MVAC System	45d	11-Nov-16	05-Jan-17	-91d	[Gantt bar]																																			
EMBS5050	Biogas Area Fire Services System	40d	28-Oct-16	13-Dec-16	-124d	[Gantt bar]																																			
EMBS5100	Biogas Area Plumbing & Drainage System	60d	06-Sep-16	17-Nov-16	-102d	[Gantt bar]																																			
Weighbridge and Gate House																																									
EMBS6000	Weighbridge and Gate House MVAC System	60d	22-Sep-16	02-Dec-16	-65d	[Gantt bar]																																			
EMBS6050	Weighbridge and Gate House Fire Services System	60d	22-Sep-16	02-Dec-16	-115d	[Gantt bar]																																			
General																																									
11kV Switchboard Room																																									
EM190600	Building services installation in 11kV Switch Board Room	33d	20-Aug-16	28-Sep-16	-144d	[Gantt bar]																																			
EM190620	Install 11kV / 380V Transformers and cables	123d	20-Aug-16	17-Jan-17	-134d	[Gantt bar]																																			
EM190640	11kV Switchgear and cables Installation	123d	20-Aug-16	17-Jan-17	-144d	[Gantt bar]																																			
Electrical, Instrumentation & Control																																									
EM190150	Instrumentation, Control & Monitoring System (SCADA/PLC)	103d	15-Oct-16	18-Feb-17	-124d	[Gantt bar]																																			
EM19021B	Switchboard and MCC Installation	100d	29-Sep-16	01-Feb-17	-127d	[Gantt bar]																																			
EM190220	Cabling works (from Main LVSB to MCC)	45d	13-Dec-16	09-Feb-17	-116d	[Gantt bar]																																			
EM19022B	Cables and Accessories, Cable Containment System Installation	133d	03-Oct-16	14-Mar-17	-144d	[Gantt bar]																																			
EM19023B	Earthing and Lightning System Installation	210d	31-Aug-15 A	13-Feb-17	-119d	[Gantt bar]																																			
EM19024B	Emergency Genset Installation	30d	14-Jan-17	21-Feb-17	-128d	[Gantt bar]																																			
EM19024D	Diesel Tank Installation	20d	02-Nov-16	24-Nov-16	-98d	[Gantt bar]																																			
EM19024P	Diesel Tank Pipework	40d	25-Nov-16	13-Jan-17	-98d	[Gantt bar]																																			
EM19025B	Equipment at Gate House	12d	19-Nov-16	02-Dec-16	-63d	[Gantt bar]																																			
EM19030B	ELV System Installation	60d	29-Nov-16	13-Feb-17	-119d	[Gantt bar]																																			
Building Services and Management System																																									
EM19020B	Building Services and Management System	125d	05-Dec-16	12-May-17	-132d	[Gantt bar]																																			
EM19050B	Platform & Handrails (FRP)	45d	05-Jan-17	01-Mar-17	-105d	[Gantt bar]																																			
EM19055B	Pipe Bridge (AD Link to Building 1 & 2) Footing	15d	25-Jun-16	13-Jul-16	-13d	[Gantt bar]																																			
EM19065B	Pipe Bridge (AD Link to Building 1 & 2) Structural Steelwork	22d	14-Jul-16	08-Aug-16	-13d	[Gantt bar]																																			
EM19075B	Pipe Bridge (AD Link to Building 1 & 2) Installations	45d	03-Sep-16	28-Oct-16	-35d	[Gantt bar]																																			
EM200060	Lifting Appliances, Monorail	45d	15-Oct-16	06-Dec-16	-38d	[Gantt bar]																																			
EM200100	Permanent Mobile Plants	45d	01-Feb-17	24-Mar-17	-125d	[Gantt bar]																																			
Energisation of Switchboards																																									
EN100050	Energisation of Switchboard (Main 11kV Switchboard room)	1d	02-Feb-17	02-Feb-17	-144d	[Gantt bar]																																			
EN100100	Energisation of Switchboard (Main LV Switchroom)	1d	07-Feb-17	07-Feb-17	-144d	[Gantt bar]																																			
EN100150	Energisation of Switchboard (For Anaerobic Digestion System and Dewatering System)	1d	07-Feb-17	07-Feb-17	-116d	[Gantt bar]																																			
EN100200	Energisation of Switchboard (For Administration Building)	1d	07-Feb-17	07-Feb-17	-144d	[Gantt bar]																																			
EN100250	Energisation of Switchboard (For Composting System)	1d	07-Feb-17	07-Feb-17	-103d	[Gantt bar]																																			
EN100300	Energisation of Switchboard (For Pre-Treatment System)	1d	07-Feb-17	07-Feb-17	-144d	[Gantt bar]																																			
EN100350	Energisation of Switchboard (For Centralized Air Pollution System)	1d	07-Feb-17	07-Feb-17	-144d	[Gantt bar]																																			

Activity ID	Activity Name	Remaining Duration	Start	Finish	Total Float	2015												2016												2017											
						Nov	Dec	Jan	Feb	Mar	Apr	May	Jun	Jul	Aug	Sep	Oct	Nov	Dec	Jan	Feb	Mar	Apr	May	Jun	Jul	Aug	Sep	Oct	Nov	Dec	Jan	Feb	Mar	Apr	May	Jun	Jul	Aug	Sep	Oct
TESTING AND COMMISSIONING																																									
Site Testing (including hydraulic testing & pipe pressure testing)																																									
		74d	08-Feb-17	11-May-17	-89d																																				
TC100100	Site Testing of Pretreatment System	27d	15-Mar-17	19-Apr-17	-144d																																				
TC100150	Site Testing of Anaerobic Digestion Treatment System	30d	02-Mar-17	06-Apr-17	-135d																																				
TC100200	Site Testing of Heat Recovery and Power Generation System	42d	08-Feb-17	28-Mar-17	-64d																																				
TC100250	Site Testing of Biogas Cleaning and Storage System	30d	10-Feb-17	16-Mar-17	-55d																																				
TC100300	Site Testing of WWTS	51d	08-Feb-17	08-Apr-17	-138d																																				
TC100350	Site Testing of CAPCS	51d	07-Mar-17	11-May-17	-91d																																				
TC100400	Site Testing of Composting System	43d	08-Feb-17	29-Mar-17	-60d																																				
TC100450	Site Testing of Weighbridge System & Vehicle Wash System	39d	08-Feb-17	24-Mar-17	-54d																																				
System Commissioning (24 hours)																																									
TC110100	Pre-Treatment Building & Facilities	1d	20-Apr-17	20-Apr-17	-180d																																				
TC110300	Biogas Cleaning and Storage System	1d	24-Apr-17	24-Apr-17	-105d																																				
TC110500	Wastewater Treatment System	1d	28-Apr-17	28-Apr-17	-105d																																				
TC110550	Centralized Air Pollution Control System	1d	29-Apr-17	29-Apr-17	-105d																																				
TC110850	Vehicle Washing System	1d	17-May-17	17-May-17	-117d																																				
TC110900	Master Control System - SCADA/PLC System	1d	18-May-17	18-May-17	-117d																																				
Anaerobic Digestion Treatment System																																									
TC110150	Anaerobic Digester no 1	1d	21-Apr-17	21-Apr-17	-180d																																				
TC110200	Anaerobic Digester no 2	1d	22-Apr-17	22-Apr-17	-105d																																				
TC110250	Anaerobic Digester no 3	1d	23-Apr-17	23-Apr-17	-105d																																				
Heat Recovery and Power Generation System																																									
TC110350	Combine Heat Power System no 1	1d	25-Apr-17	25-Apr-17	-105d																																				
TC110400	Combine Heat Power System no 2	1d	26-Apr-17	26-Apr-17	-105d																																				
TC110450	Combine Heat Power System no 3	1d	27-Apr-17	27-Apr-17	-105d																																				
Composting System																																									
TC110600	Tunnel Composting nos 1 - 3	1d	12-May-17	12-May-17	-117d																																				
TC110650	Tunnel Composting nos 4 - 6	1d	13-May-17	13-May-17	-117d																																				
TC110700	Maturation Area Facilities	1d	14-May-17	14-May-17	-117d																																				
Weighbridge System																																									
TC110750	Weighbridge System No 1	1d	15-May-17	15-May-17	-117d																																				
TC110800	Weighbridge System No 2	1d	16-May-17	16-May-17	-117d																																				
Process Startup, Process Commissioning & Plant Commissioning																																									
Process Start up																																									
PS900100	N2 Purging of Anaerobic Digester No 1	7d	22-Apr-17	28-Apr-17	-180d																																				
PS900150	Inoculate Anaerobic Digester No.1 (Seeding)	14d	29-Apr-17	12-May-17	-180d																																				
PS900200	N2 Purging of Anaerobic Digester No 2	7d	13-May-17	19-May-17	-164d																																				
PS900250	N2 Purging of Anaerobic Digester No 3	7d	20-May-17	26-May-17	-164d																																				
PS900300	Start up test with Anaerobic Digester No 1	30d	13-May-17	11-Jun-17	-180d																																				
PS900350	Biogas Production from Anaerobic Digester No 1	7d	12-Jun-17	18-Jun-17	-180d																																				
PS900400	Start-Up of Gas System (Including Desulphurisation System)	7d	19-Jun-17	25-Jun-17	-165d																																				
PS900450	Dewatering Test and Start-Up of Dewatering System	15d	19-Jun-17	03-Jul-17	-177d																																				
PS900500	Start-Up of Composting System	14d	04-Jul-17	17-Jul-17	-177d																																				
PS900550	Transferring 50% Digester from Anaerobic Digester No.1 to No.2	1d	19-Jun-17	19-Jun-17	-180d																																				
PS900600	Start up test with Anaerobic Digester No 2	30d	20-Jun-17	19-Jul-17	-180d																																				
PS900650	Biogas Production from Anaerobic Digester No 2	7d	13-Jul-17	19-Jul-17	-180d																																				
PS900700	Transferring 50% Digester from Anaerobic Digester No.2 to No.3	1d	20-Jul-17	20-Jul-17	-180d																																				
PS900750	Start up test with Anaerobic Digester No 3	30d	21-Jun-17	20-Jul-17	-180d																																				
PS900800	Biogas Production from Anaerobic Digester No 3	7d	14-Jul-17	20-Jul-17	-180d																																				
Process Commissioning																																									
		39d	21-Jul-17	28-Aug-17	-180d																																				
		39d	21-Jul-17	28-Aug-17	-180d																																				

